

BIDIRECTIONAL "BASIC" BALL VALVES



INTRODUCTION

The incorporation of the Bidirectional ball valves supposes an evolution in the family of HIDROTEN ball valves improving a product supported by years of experience in the market.

Features

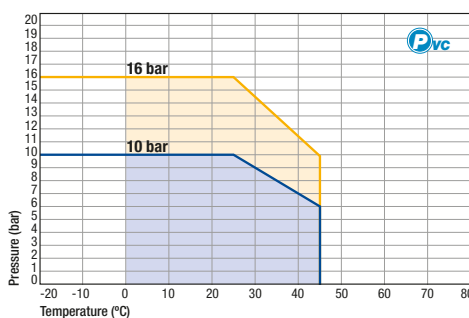
- Bidirectionality by its threaded closing ball port (indicative of tightening on the port teflon).
- Ergonomic and symmetric handle with adjusting torque system.
- EPDM and VITON o-rings .
- Posterior chance of installation of actuator by clamp (Ø20-Ø50) or by support (Ø63-90).
- SPHERIC and machined ball and PTFE ball seats.
- Outlets from Ø20 to Ø90 and from 1/2" to 3".
- Solvent socket, female threaded, solvent socket/female threaded and PE outlets.
- Minimum drop pressure.
- Nominal pressure: PN 16 bar in Ø20-63 and PN 10 in Ø75-90.

Applications

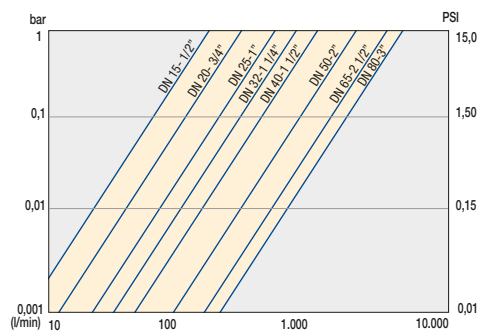
The main applications of these valves are in the next sectors:

- Industry, swimming pools, agriculture and water treatments.

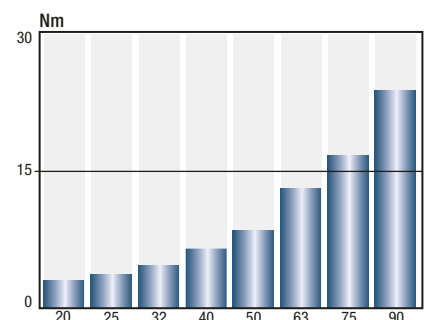
PRESSURE/TEMPERATURE



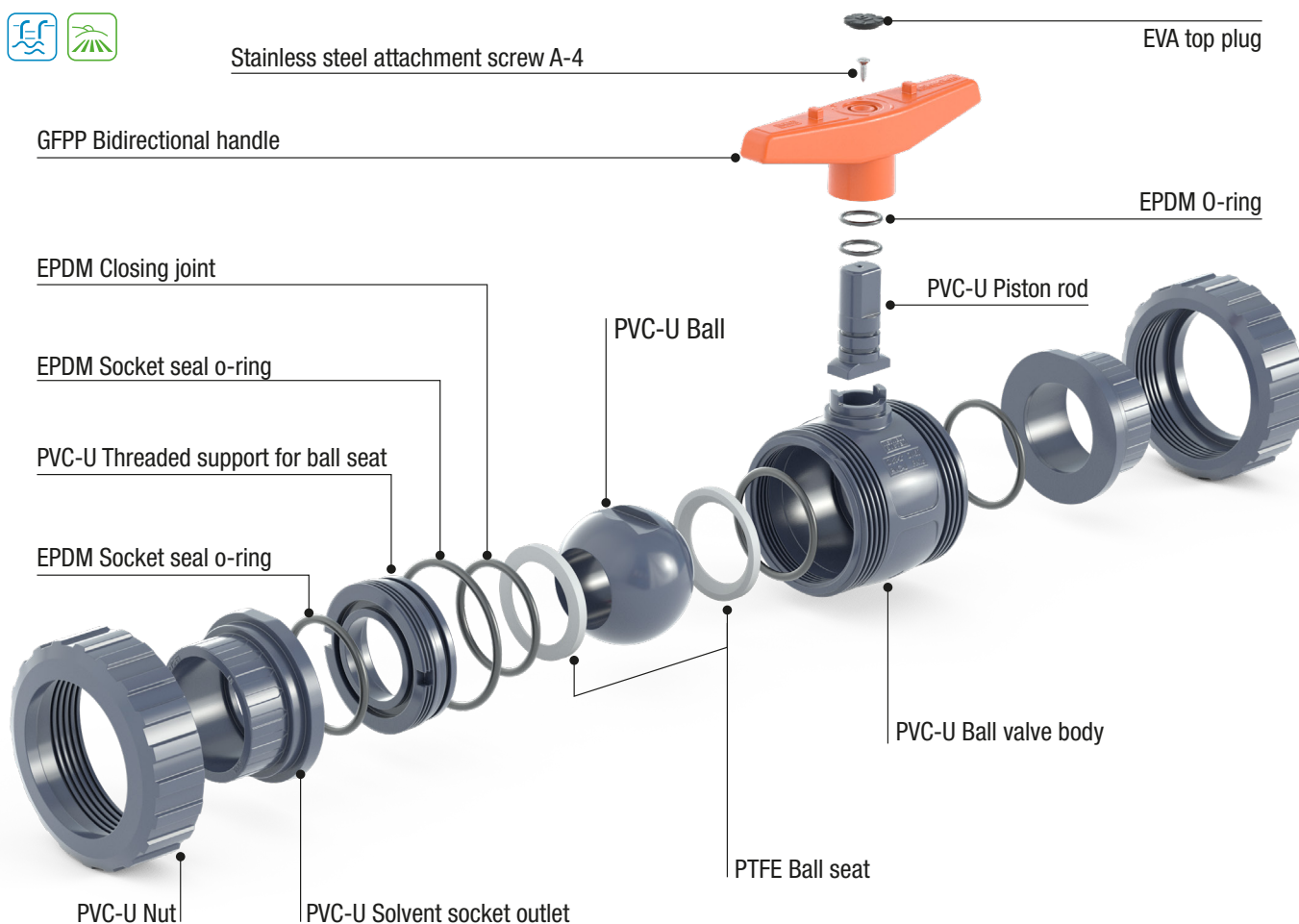
LOAD LOSS CURVES



OPERATION TORQUE



COMPONENTS



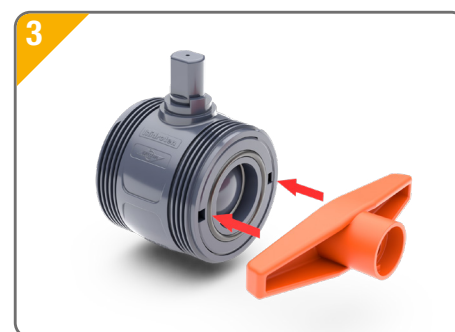
ASSEMBLY INSTRUCTIONS



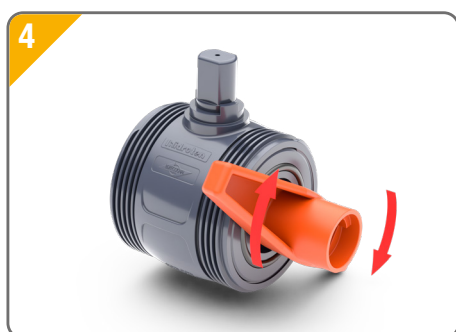
1. Remove the valve body from the installation. Loosen the nuts according to the arrows.



2. Holding the valve in the closed position, unscrew the nut and remove the handle.



3. Adjust the handle to the port teflon. Introducing the serrated part of the handle into the two grooves.



4. Tighten up port the port teflon, following the direction marked on port teflon.



5. The handle is placed in the initial position and screwed into place.



6. We put the valve back into the installation and tighten the nuts again.