

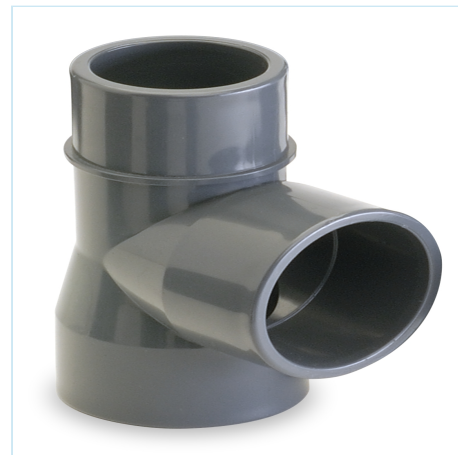


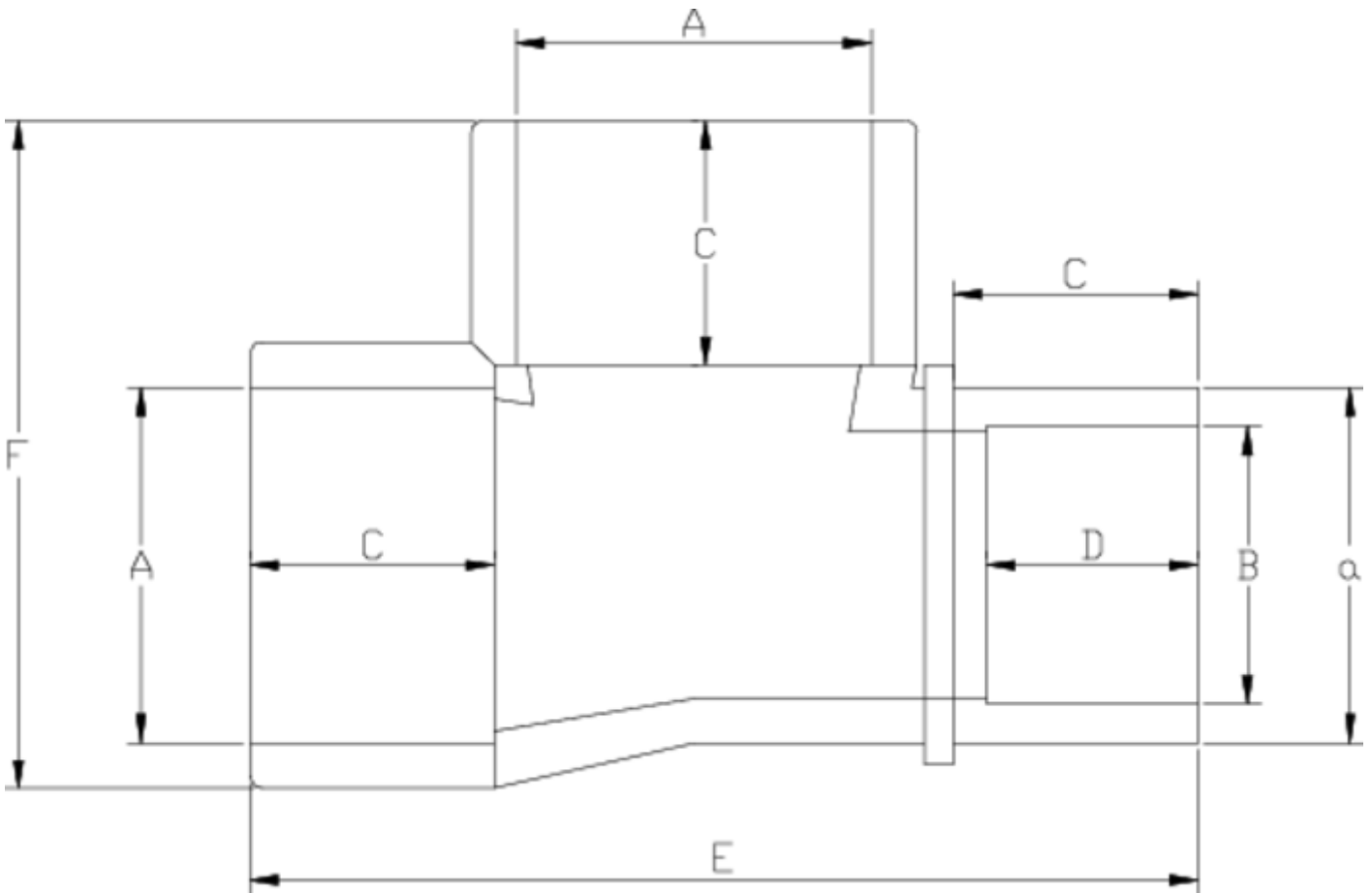
## PVC-U pressure fittings

# 90° tee female-female-male

## ITEM 201

REFERENCE	DESCRIPTION	Net weight	Volumen (m <sup>3</sup> )	Gross weight	Unidades lote
1001752	TEE 90° FEMALE-FEMALE-MALE 32X32X25	0,060819	0,02244	4,745	70
1001753	TEE 90° FEMALE-FEMALE-MALE 40X40X32	0,116135	0,03682	9,84	80
1001754	TEE 90° FEMALE-FEMALE-MALE 50X50X40	0,203511	0,04879	13,87	65
1001755	TEE 90° FEMALE-FEMALE-MALE 63X63X50	0,377847	0,04879	14,9335	38
1001756	TEE 90° FEMALE-FEMALE-MALE 75X75X63	0,5109	0,03682	6,68	12
1001757	TEE 90° FEMALE-FEMALE-MALE 90X90X75	0,8379	0,03129	5,6692	6
1001758	TEE 90° FEMALE-FEMALE-MALE 110X110X90	1,472867	0,04717	9,74	6





## ITEM 201 | 90° tee female-female-male

CÓDIGO	A-a-B	PESO (g)	C	D	E	F	PN	MEDIDA
01752	32x32x25	62	22	19	85	59	PN16	MÉTRICO
01753	40x40x32	102	26	22	106	74	PN16	MÉTRICO
01754	50x50x40	175	31	26	125	88	PN16	MÉTRICO
01755	63x63x50	256	38	31	154	104	PN16	MÉTRICO
01756	75x75x63	460	45	38	180	130	PN16	MÉTRICO
01758	110x110x90	1478	61	51	250	183	PN16	MÉTRICO



## Product Documents



## Product Certificates



## Company Certificates

