



## Clamp saddles

# Clamp saddle 4 screws

## ITEM 126

REFERENCE	DESCRIPTION	Net weight	Volumen (m <sup>3</sup> )	Gross weight	Unidades lote
1003011	PP CLAMP SADDLE 63-1/2"	0,239078	0,04879	14,92	60
1003012	PP CLAMP SADDLE 63-3/4"	0,234162	0,04879	14,625	60
1003013	PP CLAMP SADDLE 63-1"	0,244662	0,04879	15,2527	60
1003014	PP CLAMP SADDLE 63-1 1/4"	0,253662	0,06347	16,275	60
1003015	PP CLAMP SADDLE 63-1 1/2"	0,254078	0,06347	16,3	60
1003016	PP CLAMP SADDLE 75-1/2"	0,301003	0,04460	11,545	35
1003017	PP CLAMP SADDLE 75-3/4"	0,301431	0,04460	11,56	35
1003018	PP CLAMP SADDLE 75-1"	0,308574	0,04460	11,81	35
1003019	PP CLAMP SADDLE 75-1 1/4"	0,323574	0,04460	12,335	35
1003020	PP CLAMP SADDLE 75-1 1/2"	0,333803	0,06347	12,75	35
1003021	PP CLAMP SADDLE 75-2"	0,370003	0,04879	13,53	35
1003022	PP CLAMP SADDLE 90-1/2"	0,342503	0,04117	11,245	30
1003023	PP CLAMP SADDLE 90-3/4"	0,347503	0,04460	11,395	30
1003024	PP CLAMP SADDLE 90-1"	0,35767	0,06347	11,7	30
1003025	PP CLAMP SADDLE 90-1 1/4"	0,370503	0,04460	12,085	30
1003026	PP CLAMP SADDLE 90-1 1/2"	0,369103	0,06347	12,1	30
1003027	PP CLAMP SADDLE 90-2"	0,416337	0,06150	13,41	30
1003028	PP CLAMP SADDLE 110-3/4"	0,46898	0,06150	12,94	25
1003029	PP CLAMP SADDLE 110-1"	0,47498	0,06150	13,09	25
1003030	PP CLAMP SADDLE 110-1 1/4"	0,48738	0,06347	13,4	25
1003031	PP CLAMP SADDLE 110-1 1/2"	0,49858	0,06347	13,68	25
1003032	PP CLAMP SADDLE 110-2"	0,521675	0,06150	11,59	20
1003033	PP CLAMP SADDLE 125-3/4"	0,598268	0,06150	17,7	28





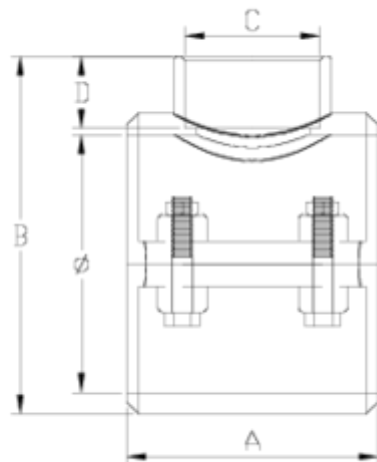
## Clamp saddles

# Clamp saddle 4 screws

## ITEM 126

REFERENCE	DESCRIPTION	Net weight	Volumen (m <sup>3</sup> )	contenido.Peso bruto	Unidades lote
1003034	PP CLAMP SADDLE 125-1"	0,580589	0,06150	17,205	28
1003035	PP CLAMP SADDLE 125-1 1/4"	0,587732	0,06150	17,405	28
1003036	PP CLAMP SADDLE 125-1 1/2"	0,596839	0,06150	17,66	28
1003037	PP CLAMP SADDLE 125-2"	0,602375	0,06150	17,815	28
1003105	PP CLAMP SADDLE 110-2 1/2"	0,5942	0,06150	13,04	20
1003107	PP CLAMP SADDLE 125-2 1/2"	0,67258	0,06150	17,76	25
1003115	PP CLAMP SADDLE 110-1/2"	0,47098	0,06150	12,99	25
1003119	PP CLAMP SADDLE 125-1/2"	0,573625	0,06150	17,01	28
1003143	PP CLAMP SADDLE 50-1 1/4"	0,268	0,03682	12,555	45





## ITEM 126 | Clamp saddle 4 screws

Código	f tubo - C	Peso (g)	A	B	D	PN	TIPO ROSCA
03143	50 - 1 1/4"	289	70	99	23	PN16	BSP
03011	63 - 1/2"	237	70	94	16	PN16	BSP
03012	63 - 3/4"	236	70	94	17	PN16	BSP
03013	63 - 1"	244	70	99	21	PN16	BSP
03014	63 - 1 1/4"	250	70	99	23	PN16	BSP
03015	63 - 1 1/2"	262	70	99	31	PN16	BSP
03016	75 - 1/2"	317	85	112	16	PN10	BSP
03017	75 - 3/4"	309	85	112	17	PN10	BSP
03018	75 - 1"	315	85	112	21	PN10	BSP
03019	75 - 1 1/4"	329	85	114	23	PN10	BSP



## ITEM 126 | Clamp saddle 4 screws

03020	75 - 1 1/2"	331	85	114	31	PN10	BSP
03021	75 - 2"	366	85	118	38	PN10	BSP
03022	90 - 1/2"	340	87	121	16	PN10	BSP
03023	90 - 3/4"	345	87	124	17	PN10	BSP
03024	90 - 1"	351	87	127	21	PN10	BSP
03025	90 - 1 1/4"	363	87	129	23	PN10	BSP
03026	90 - 1 1/2"	369	87	129	31	PN10	BSP
03027	90 - 2"	399	87	122	38	PN10	BSP
03115	110 - 1/2"	470	104	147	16	PN10	BSP
03028	110 - 3/4"	463	104	147	17	PN10	BSP
03029	110 - 1"	480	104	150	21	PN10	BSP
03030	110 - 1 1/4"	486	104	155	23	PN10	BSP
03031	110 - 1 1/2"	496	104	155	31	PN10	BSP
03032	110 - 2"	528	104	156	38	PN10	BSP
03105	110 - 2 1/2"	598	104	163	44	PN10	BSP
03119	125 - 1/2"	590	101	166	16	PN10	BSP
03033	125 - 3/4"	557	101	166	17	PN10	BSP
03034	125 - 1"	578	101	168	21	PN10	BSP
03035	125 - 1 1/4"	581	101	172	23	PN10	BSP
03036	125 - 1 1/2"	592	101	172	31	PN10	BSP
03037	125 - 2"	599	101	175	38	PN10	BSP
03107	125 - 2 1/2"	670	101	185	44	PN10	BSP



## Product Documents



## Product Certificates

## Company Certificates

