



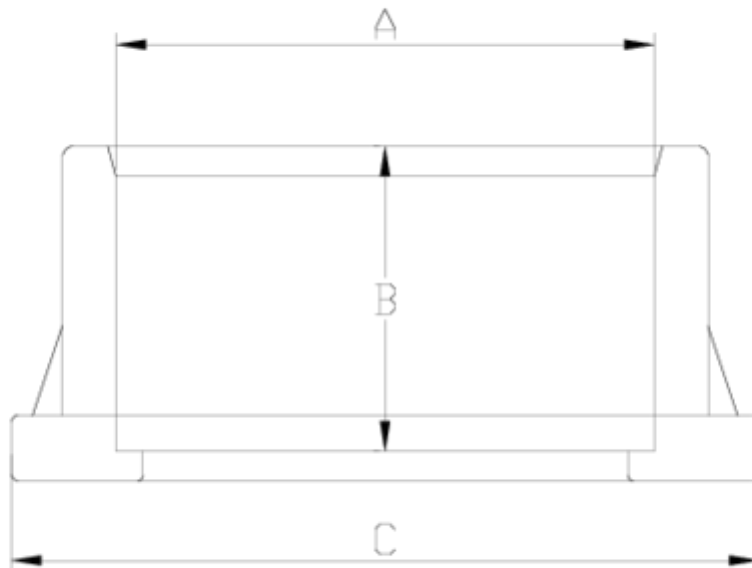
## Flanges and adaptors

# security conical adaptor

## ITEM 079

REFERENCE	DESCRIPTION	Net weight	Volumen (m <sup>3</sup> )	Gross weight	Unidades lote
1010099	SECURITY CONICAL CLAMP 90	0,351588	0,03682	11,8	32
1010101	SECURITY CONICAL CLAMP 110	0,52404	0,03682	11,03	20
1010102	SECURITY CONICAL CLAMP 125	0,659728	0,04460	12,605	18
1010103	SECURITY CONICAL ADAPTOR 140	0,938028	0,06150	17,805	18
1010104	SECURITY CONICAL CLAMP 160	1,15882	0,04717	12,23	10
1010105	SECURITY CONICAL ADAPTOR 200	1,78865	0,04117	7,795	4





## ITEM 079 | security conical adaptor

Código	A	Peso (g)	B	C	PN	MEDIDA
10099	90	370	51	125	PN16	MÉTRICO
10101	110	482	61	150	PN16	MÉTRICO
10102	125	647	69	168	PN16	MÉTRICO
10103	140	915	76	188	PN16	MÉTRICO
10104	160	1116	86	213	PN10	MÉTRICO
10105	200	1675	100	247	PN10	MÉTRICO



## Product Documents



## Product Certificates



## Company Certificates

