



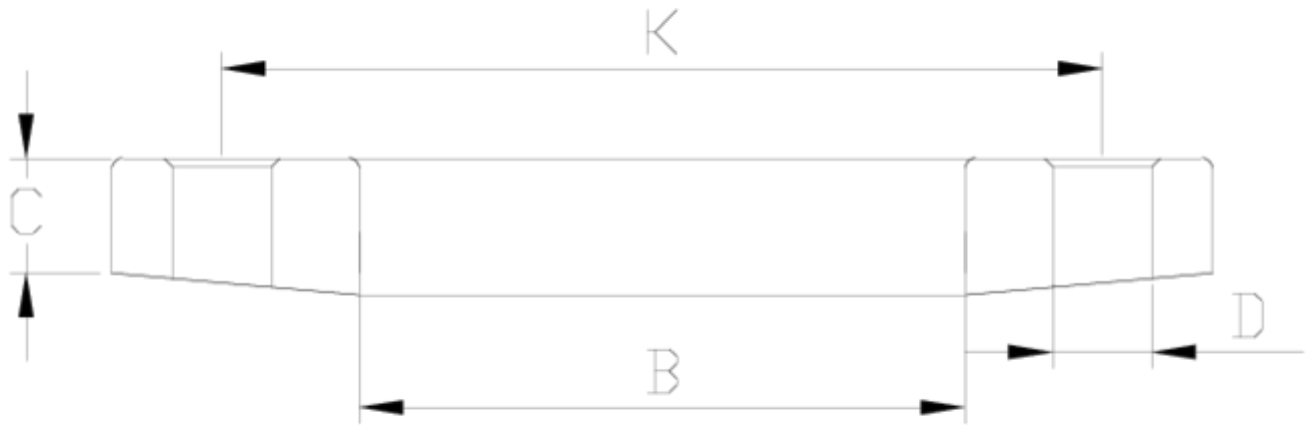
Flanges and adaptors

security plain flange

ITEM 078

| REFERENCE | DESCRIPTION | Net weight | Volumen (m ³) | Gross weight | Unidades lote |
|-----------|---------------------------|------------|---------------------------|--------------|---------------|
| 1010008 | SECURITY PLAIN FLANGE 90 | 0,576378 | 0,04117 | 19,23 | 32 |
| 1010009 | SECURITY PLAIN FLANGE 110 | 0,68635 | 0,03648 | 14,321 | 20 |
| 1010010 | SECURITY PLAIN FLANGE 125 | 0,83 | 0,03648 | 13,806 | 18 |
| 1010011 | SECURITY PLAIN FLANGE 140 | 0,9346 | 0,03129 | 15,5266 | 16 |
| 1010012 | SECURITY PLAIN FLANGE 160 | 1,087 | 0,03129 | 11,443 | 10 |
| 1010013 | SECURITY PLAIN FLANGE 200 | 1,371838 | 0,04879 | 11,55 | 8 |





ITEM 078 | security plain flange

| Código | f | Peso (g) | B | C | K | D | PN | MEDIDA |
|--------|-----|----------|-----|----|---------|------|------|---------|
| 10008 | 90 | 562 | 110 | 20 | 146-160 | 8x18 | PN16 | MÉTRICO |
| 10009 | 110 | 672 | 133 | 22 | 178-190 | 8x18 | PN16 | MÉTRICO |
| 10010 | 125 | 717 | 149 | 24 | 190 | 8x18 | PN16 | MÉTRICO |
| 10011 | 140 | 885 | 167 | 26 | 210-216 | 8x18 | PN16 | MÉTRICO |
| 10012 | 160 | 1185 | 190 | 28 | 235-241 | 8x22 | PN10 | MÉTRICO |
| 10013 | 200 | 1302 | 227 | 30 | 270 | 8x22 | PN10 | MÉTRICO |



Product Documents



Product Certificates



Company Certificates

