

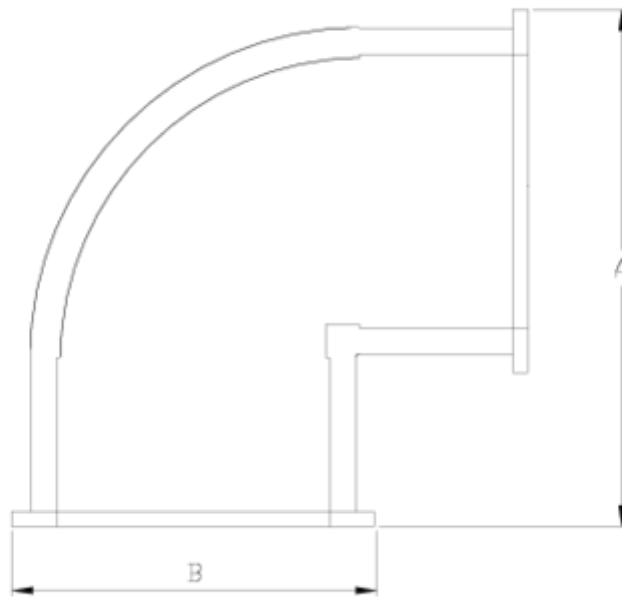


## Netvitc System pressure fittings

# GFPP Netvitc System 90° elbow ITEM 26N



REFERENCE	DESCRIPTION	Net weight	Volumen (m <sup>3</sup> )	Gross weight	Unidades lote
101N205	PP NETVITC SYSTEM 90° ELBOW 63	0,247	0,01553	2,8	10
101N207	PP NETVITC SYSTEM 90° ELBOW 90	0,6	0,03129	5,373	8
101N208	PP NETVITC SYSTEM 90° ELBOW 110	0,889963	0,04880	7,695	8
101N209	PP NETVITC SYSTEM 90° ELBOW 125	1,218283	0,04880	7,885	6
101N210	PPFV SNS 90° ELBOW 140	1,705	0,04717	6,82	2
101N211	NETVITC SYSTEM 90° ELBOW 160	2,24225	0,06150	5,405	2
101N212	PP NETVITC SYSTEM 90° ELBOW 200	3,305	0,06347	8,128	2



## ITEM 26N | GFPP Netvitc System 90° elbow

CÓDIGO	f	PESO	BRIDA	A	B	C	PN	MEDIDA
1N205	63	247	63	122	92	43	PN10	MÉTRICO
1N207	90	600	90	160	121	50	PN10	MÉTRICO
1N208	110	890	110	191	144	61	PN10	MÉTRICO
1N209	125	1218	125	219	159	70	PN10	MÉTRICO
1N210	140	1705	140	243	176	76	PN10	MÉTRICO
1N211	160	2242	160	274	201	87	PN10	MÉTRICO
1N212	200	3305	200	333	251	106	PN10	MÉTRICO



## Product Documents



## Product Certificates

## Company Certificates

