



GRPP hinged sleeve

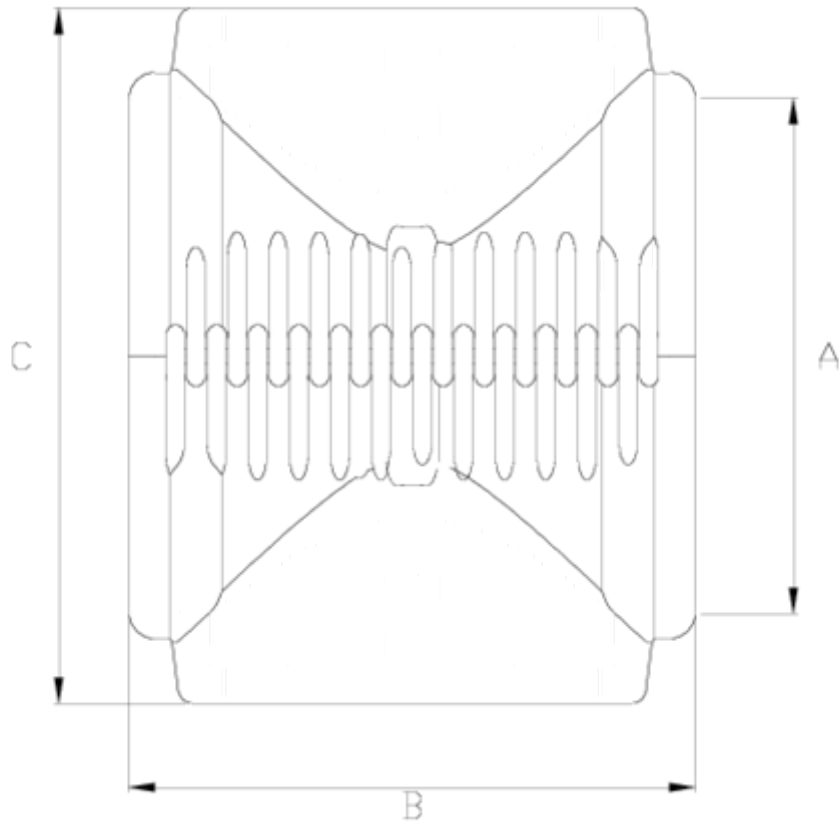
Hinged clamp saddle, double body

ITEM 140



REFERENCE	DESCRIPTION	Net weight	Volumen (m ³)	contenido.peso bruto	Unidades lote
1005144	DOUBLE HINGED SLEEVE 315 (140-160 O.)	5.453	0.06347	6.24	1
1005145	HINGED DOUBLE CLAMP SADDLE BODY 160	2.350	0.04460	5.43	2
1005146	HINGED DOUBLE CLAMP SADDLE BODY 200	2.671	0.04836	6.01	2
1005147	HINGED DOUBLE CLAMP SADDLE BODY 225	3.066	0.04836	6.80	2
1005148	HINGED DOUBLE CLAMP SADDLE BODY 250	3.425	0.04836	7.52	2
1005149	HINGED DOUBLE CLAMP SADDLE BODY 315	4.405	0.04880	4.98	1
1005150	REINFORCED D/ SADDLE BODY 400	6.060	0.06347	6.89	1
1005151	HING. DBLE CLAMP SADDLE BODY 400 140/160 OUT.	5.910	0.08677	6.93	1



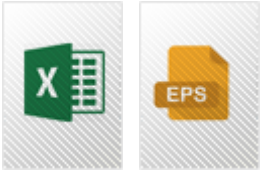


ITEM 140 | Hinged clamp saddle, double body

CÓDIGO	f tubo	PESOS	A	B	C	PN	MEDIDA
05145	160	2749	160	225	230	PN6	MÉTRICO
05146	200	2916	200	227	270	PN6	MÉTRICO
05147	225	3249	225	225	286	PN6	MÉTRICO
05148	250	3612	250	239	295	PN6	MÉTRICO
05149	315	4814	315	250	381	PN6	MÉTRICO
05144	315	5420	315	282	419	PN6	MÉTRICO
05150	400	6850	400	282	486	PN6	MÉTRICO
05151	400	6750	400	282	474	PN6	MÉTRICO



Product Documents



Product Certificates

Company Certificates

