



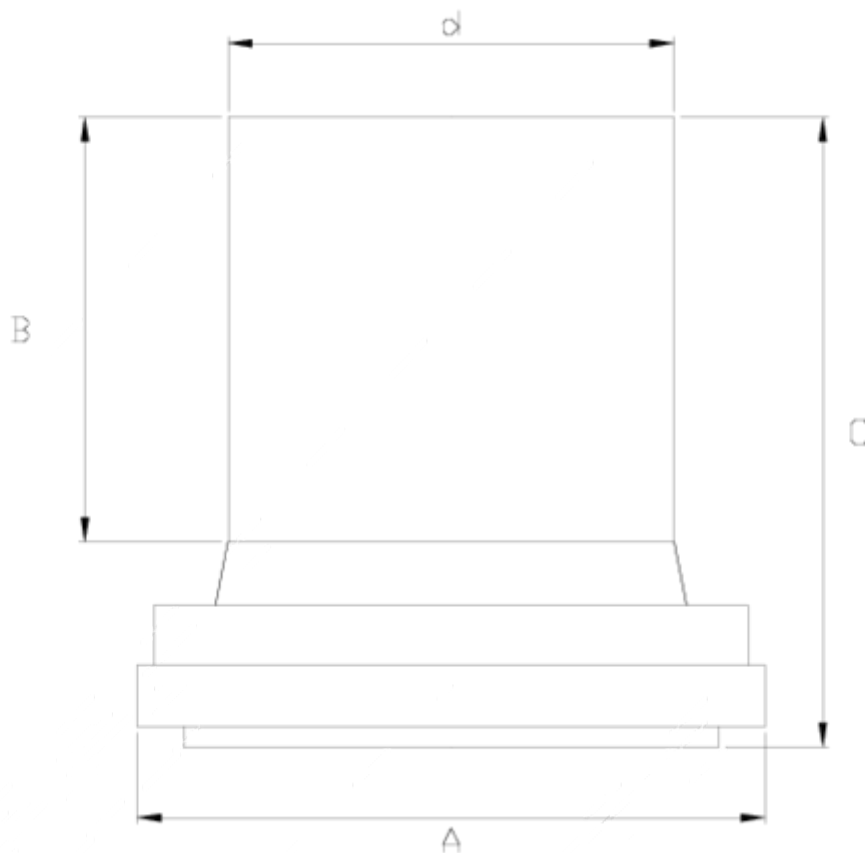
## GRPP hinged sleeve

# Thermofusion outlet 1

## ITEM 144

| REFERENCE | DESCRIPTION            | Net weight | Volumen (m <sup>3</sup> ) | Gross weight | Unidades lote |
|-----------|------------------------|------------|---------------------------|--------------|---------------|
| 1005804   | 160-400, PE OUTLET 50  | 0,375      | 0,01553                   | 4,74         | 12            |
| 1005805   | 160-400, PE OUTLET 63  | 0,4409     | 0,03129                   | 5,864        | 12            |
| 1005806   | 160-400, PE OUTLET 75  | 0,473      | 0,03129                   | 5,916        | 12            |
| 1005807   | 160-400, PE OUTLET 90  | 0,5555     | 0,03682                   | 7,215        | 12            |
| 1005808   | 160-400, PE OUTLET 110 | 0,625775   | 0,04879                   | 8,0846       | 12            |
| 1005809   | 160-400, PE OUTLET 125 | 0,788      | 0,06149                   | 10,016       | 12            |





## ITEM 144 | Thermofusion outlet 1

| CÓDIGO | d   | f tubo                  | PESOS | A   | B   | B   | PN  | MEDIDA  |
|--------|-----|-------------------------|-------|-----|-----|-----|-----|---------|
| 05804  | 50  | 160-200-225-250-315-400 | 395   | 160 | 56  | 135 | PN6 | MÉTRICO |
| 05805  | 63  | 160-200-225-250-315-400 | 428   | 160 | 89  | 140 | PN6 | MÉTRICO |
| 05806  | 75  | 160-200-225-250-315-400 | 476   | 160 | 91  | 150 | PN6 | MÉTRICO |
| 05807  | 90  | 160-200-225-250-315-400 | 531   | 160 | 100 | 155 | PN6 | MÉTRICO |
| 05508  | 110 | 160-200-225-250-315-400 | 586   | 160 | 102 | 160 | PN6 | MÉTRICO |
| 05809  | 125 | 160-200-225-250-315-400 | 718   | 160 | 135 | 185 | PN6 | MÉTRICO |



## Product Documents



## Product Certificates

## Company Certificates

