

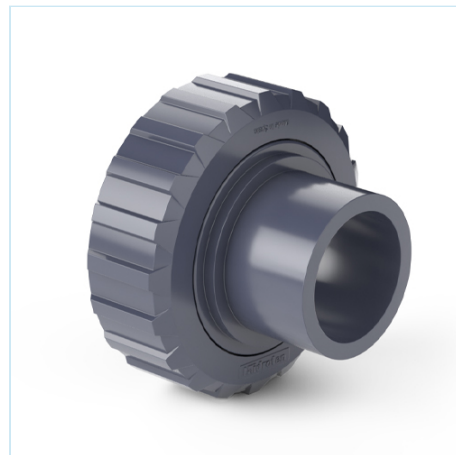


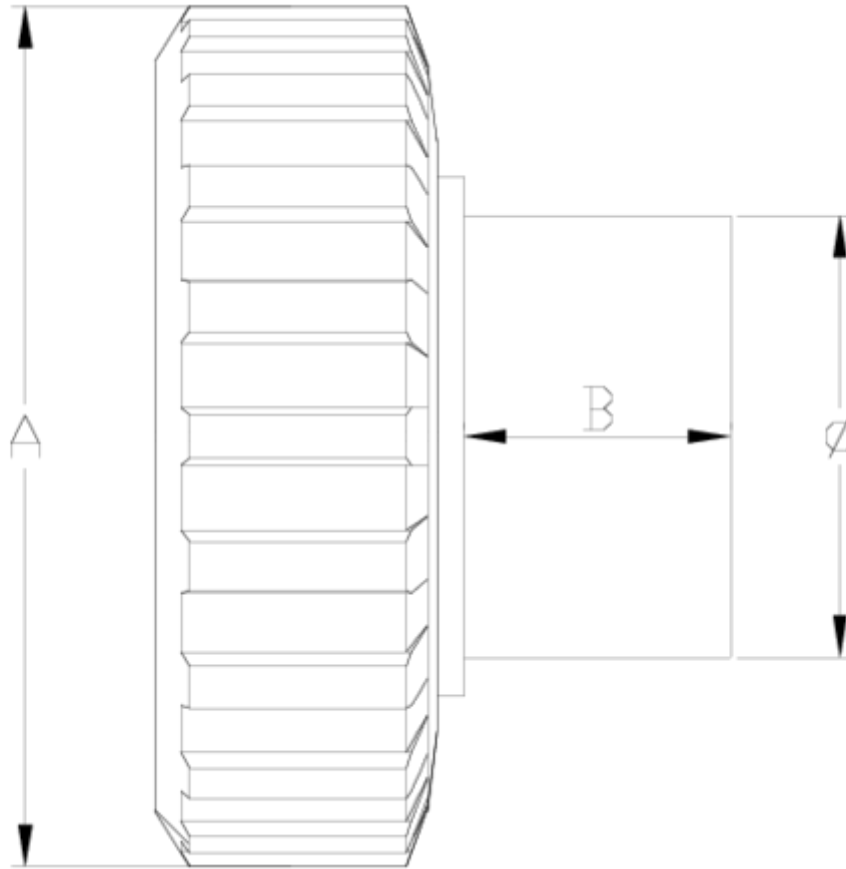
Spare parts

Male solvent socket outlet

ITEM 639

REFERENCE	DESCRIPTION	Net weight	Volumen (m ³)	Gross weight	Unidades lote
111D811	BIDIRECTIONAL BALL V. MALE OUTLET 20	0,039	0,00891	2,53	60
111D812	BIDIRECTIONAL BALL V. MALE OUTLET 25	0,056	0,00892	2,4774	40
111D813	BIDIRECTIONAL BALL V. MALE OUTLET 32	0,08	0,01553	5,1267	60
111D814	BIDIRECTIONAL BALL V. MALE OUTLET 40	0,14	0,01553	4,3167	28
111D815	BIDIRECTIONAL BALL V. MALE OUTLET 50	0,31	0,02244	9,7877	30
111D816	BIDIRECTIONAL BALL V. MALE OUTLET 63	0,336	0,02244	8,554	24





ITEM 639 | Male solvent socket outlet

CÓDIGO	f	PESO (g)	DN	A	B	PN	MEDIDA
11D811	20	41	15	55	16	PN16	MÉTRICO
11D812	25	60	20	62	19	PN16	MÉTRICO
11D813	32	86	25	72	23	PN16	MÉTRICO
11D814	40	152	32	88	25	PN16	MÉTRICO
11D815	50	238	40	103	31	PN16	MÉTRICO
11D816	63	374	50	120	38	PN16	MÉTRICO



Product Documents



Product Certificates

Company Certificates

