

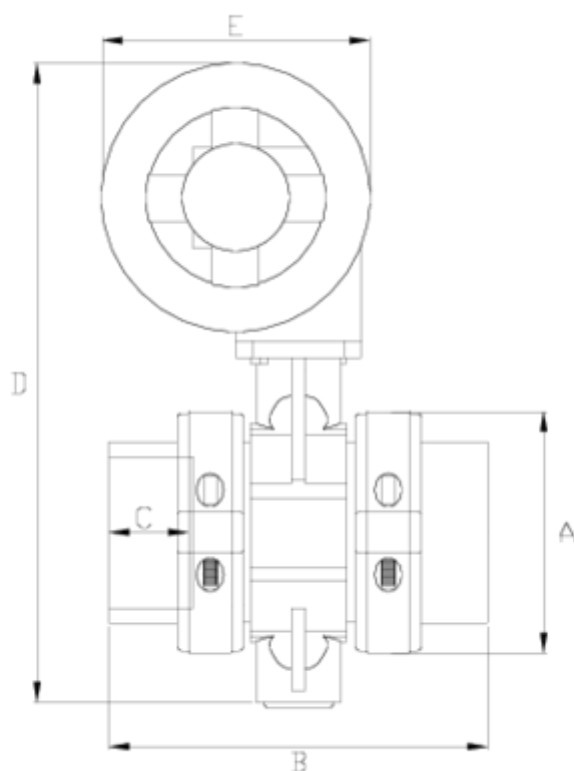


Netvitc System® butterfly valves

Manually operated, solvent socket outlet ITEM 175



| REFERENCE | DESCRIPTION | Net weight | Volumen (m ³) | Gross weight | Unidades lote |
|-----------|--------------------------------------|------------|---------------------------|--------------|---------------|
| 109N330 | BUT NET SYS V. MAN. OPER,S. SOCK 63 | 4,496 | 0,04460 | 5,19 | 1 |
| 109N331 | BUT NET SYS V. MAN. OPER,S. SOCK 75 | 4,117 | 0,03129 | 4,69 | 1 |
| 109N332 | BUT NET SYS V. MAN. OPER,S. SOCK 90 | 5,307 | 0,03129 | 5,88 | 1 |
| 109N333 | BUT NET SYS V. MAN. OPER,S. SOCK 110 | 6,377 | 0,03129 | 6,95 | 1 |
| 109N334 | BUT NET SYS V. MAN. OPER,S. SOCK 125 | 6,843 | 0,04460 | 7,673 | 1 |
| 109N335 | BUT NET SYS V. MAN. OPER,S. SOCK 140 | 9,4095 | 0,06150 | 10,33 | 1 |
| 109N336 | BUT NET SYS V. MAN. OPER,S. SOCK 160 | 11,256 | 0,04460 | 11,95 | 1 |
| 109N337 | BUT NET SYS V. MAN. OPER,S. SOCK 200 | 14,45 | 0,06347 | 15,28 | 1 |
| 109N338 | BUT NET SYS V. MAN. OPER,S. SOCK 225 | 13,314 | 0,06150 | 14,294 | 1 |



ITEM 175 | Manually operated, solvent socket outlet

| CÓDIGO | f | BRIDA | Pesos | A | B | C | D | E | PN | MEDIDA |
|--------|-----|-------|-------|-----|-----|-----|-----|-----|------|---------|
| 9N330 | 63 | 75 | 4282 | 138 | 218 | 42 | 362 | 172 | PN10 | MÉTRICO |
| 9N331 | 75 | 75 | 4240 | 138 | 192 | 44 | 362 | 172 | PN10 | MÉTRICO |
| 9N332 | 90 | 90 | 5086 | 164 | 235 | 52 | 386 | 172 | PN10 | MÉTRICO |
| 9N333 | 110 | 110 | 5869 | 188 | 247 | 61 | 406 | 172 | PN10 | MÉTRICO |
| 9N334 | 125 | 125 | 6843 | 203 | 282 | 70 | 417 | 172 | PN10 | MÉTRICO |
| 9N335 | 140 | 140 | 7922 | 224 | 298 | 78 | 488 | 250 | PN10 | MÉTRICO |
| 9N336 | 160 | 160 | 9661 | 251 | 315 | 86 | 510 | 250 | PN10 | MÉTRICO |
| 9N337 | 200 | 200 | 12294 | 297 | 390 | 106 | 584 | 250 | PN6 | MÉTRICO |
| 9N338 | 225 | 200 | 13314 | 297 | 476 | 120 | 584 | 250 | PN6 | MÉTRICO |



Product Documents



Product Certificates

Company Certificates

