



Netvitc System® butterfly valves

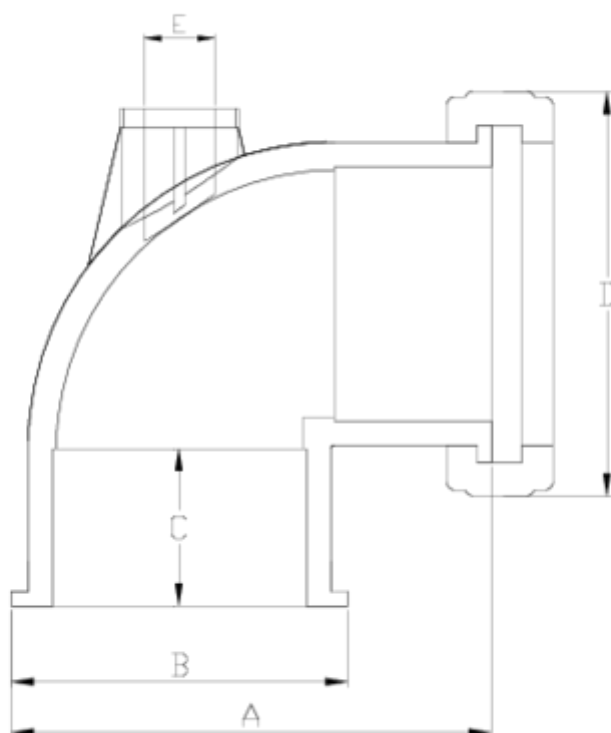
Netvitc System/FLANGE "AIR"

90° elbow

ITEM 684

REFERENCE	DESCRIPTION	Net weight	Volumen (m ³)	Gross weight	Unidades lote
109N421	ASSEMBLY FLANGE, "AIR" NET.SYS. 90° ELBOW 90	1,14	0,04717	5,32	4
109N422	ASSEMBLY FLANGE, "AIR" NET.SYS. 90° ELBOW 110-1"	1,695	0,04117	7,66	4
109N423	ASSEMBLY FLANGE, "AIR" NET.SYS. 90° ELBOW 125-2"	2,185	0,04460	9,57	4
109N424	ASSEMBLY FLANGE, "AIR" NET.SYS. 90° ELBOW 160-2"	4,026	0,06150	9,032	2
109N425	ASSEMBLY FLANGE, "AIR" NET.SYS. 90° ELBOW 200-2"	5,977	0,06150	12,934	2





ITEM 684 | Netvitc System/FLANGE "AIR" 90° elbow

CÓDIGO	f	BRIDA	PESO	A	B	C	D	E	PN	MEDIDA
9N421	90	90	1139	159	121	51	164	3/4"	PN10	MÉTRICO
9N422	110	110	1692	195	144	61	188	1"	PN10	MÉTRICO
9N423	125	125	2182	210	159	69	203	2"	PN10	MÉTRICO
9N424	160	160	4245	275	201	86	251	2"	PN10	MÉTRICO
9N425	200	200	6077	333	251	106	297	2"	PN6	MÉTRICO



Product Documents



Product Certificates

Company Certificates

