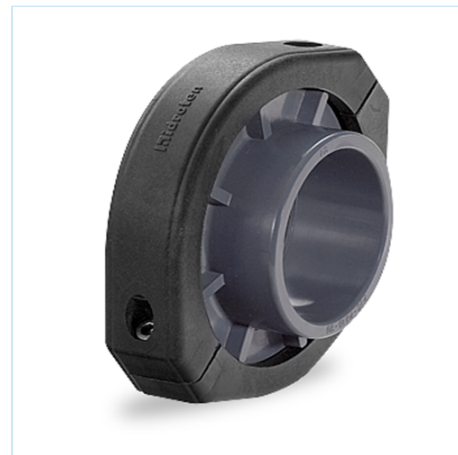


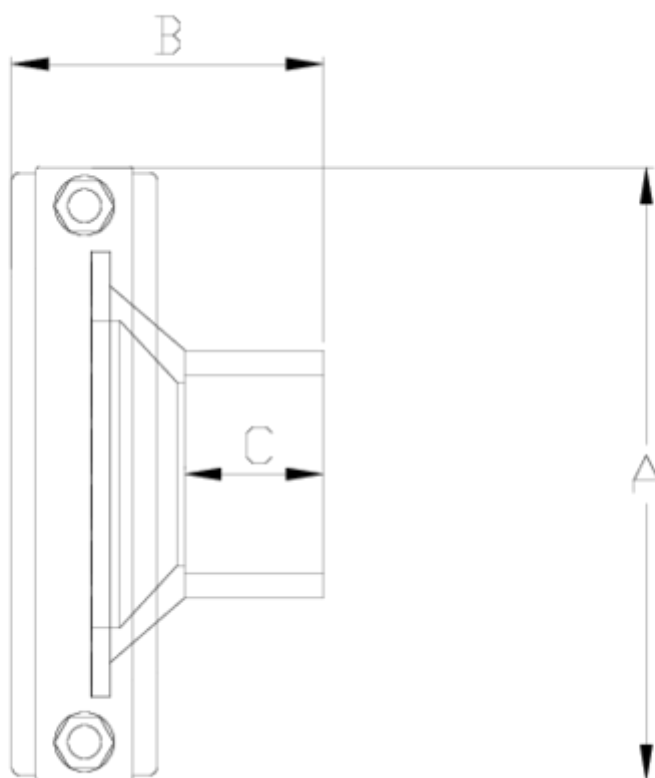


## Netvic System® butterfly valves

# Reducing clamp and adaptor, solvent socket outlet ITEM 180



REFERENCE	DESCRIPTION	Net weight	Volumen (m <sup>3</sup> )	Gross weight	Unidades lote
109N456	NETVI SYS CLAMP & ADAPT, GLUED RED. 125-90	0,945	0,01553	4,02	4
109N457	NETVI SYS CLAMP & ADAPT, GLUED RED. 125-110	1,06	0,01553	4,48	4
109N458	NETVI SYS CLAMP & ADAPT, GLUED RED. 125	1,02	0,01553	4,32	4
109N460	NETVI SYS CLAMP & ADAPT, GLUED RED. 160-110	1,8	0,02244	7,2	4
109N461	NETVI SYS CLAMP & ADAPT, GLUED RED. 160-125	1,80265	0,04117	7,851	4
109N462	NETVI SYS CLAMP & ADAPT, GLUED RED. 160-140	1,686	0,04117	7,624	4
109N463	NETVI SYS CLAMP & ADAPT, GLUED RED. 160	1,812	0,04117	8,128	4
109N464	NETVI SYS CLAMP & ADAPT, GLUED RED. 160-200	2,8299	0,04117	11,96	4



## ITEM 180 | Reducing clamp and adaptor, solvent socket outlet

Pesos	CÓDIGO	f	BRIDA	A	B	C	PN	MEDIDA
945	9N456	90	125	203	81	52	PN10	MÉTRICO
982	9N457	110	125	203	89	62	PN10	MÉTRICO
1020	9N458	125	125	203	103	70	PN10	MÉTRICO
1619	9N460	110	160	251	93	66	PN10	MÉTRICO
1629	9N461	125	160	251	102	75	PN10	MÉTRICO
1686	9N462	140	160	251	107	80	PN10	MÉTRICO
1812	9N463	160	160	251	117	86	PN10	MÉTRICO
2616	9N464	200	160	251	177	107	PN6	MÉTRICO



## Product Documents



## Product Certificates

## Company Certificates

