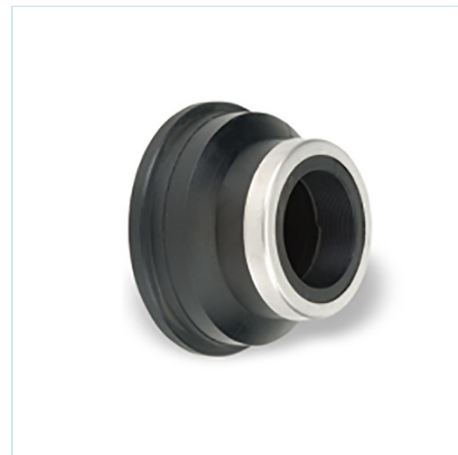


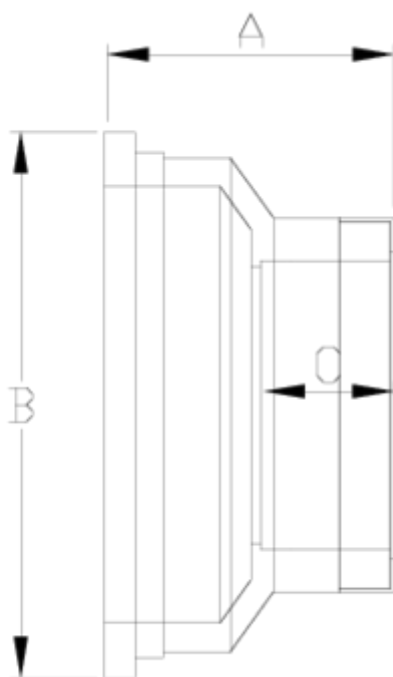


## Netvitc System pressure fittings

# Netvitc System adaptor, F/T ITEM 18N

REFERENCE	DESCRIPTION	Net weight	Volumen (m <sup>3</sup> )	Gross weight	Unidades lote
101N918	PP NET. SYS. ADAPTOR,F. THREAD 63-2"	0,107225	0,00472	0,546	4
101N919	PP NET. SYS. ADAPTOR,F. THREAD 90-1"	0,143225	0,00473	0,69	4
101N920	PP NET. SYS. ADAPTOR,F. THREAD 90-2"	0,193	0,00473	0,89	4
101N921	PP NET. SYS. ADAPTOR,F. THREAD 90-3"	0,233225	0,00473	1,05	4
101N924	PP NET. SYS. ADAPTOR,F. THREAD 110-2"	0,191575	0,00472	1,093	4
101N926	PP NET. SYS. ADAPTOR,F. THREAD 110-3"	0,263325	0,00891	1,2407	4
101N927	PP NET. SYS. ADAPTOR,F. THREAD 110-4"	0,396	0,00891	1,8444	4
101N929	PP NET. SYS. ADAPTOR,F. THREAD 125-2"	0,5	0,00892	2,24	4
101N930	PP NET. SYS. ADAPTOR,F. THREAD 125-2 1/2"	0,46	0,00892	1,98	4
101N931	PP NET. SYS. ADAPTOR,F. THREAD 125-3"	0,396	0,00892	1,724	4
101N932	PP NET. SYS. ADAPTOR,F. THREAD 125-4"	0,477	0,01553	2,148	4
101N933	PP NET. SYS. ADAPTOR,F. THREAD 140-3"	0,647	0,00891	1,48	2
101N934	PP NET. SYS. ADAPTOR,F. THREAD 160-3"	0,99	0,02243	2,47	2





## ITEM 18N | Netvitc System adaptor, F/T

CÓDIGO	f	PESO	BRIDA	A	B	C	PN	ROSCA
1N918	2"	107	63	40	92	37	PN10	BSP
1N919	1"	143	90	56	121	22	PN10	BSP
1N920	2"	193	90	50	121	38	PN10	BSP
1N921	3"	233	90	70	121	51	PN10	BSP
1N924	2"	192	110	65	144	38	PN10	BSP
1N926	3"	263	110	78	144	51	PN10	BSP
1N927	4"	396	110	86	144	62	PN10	BSP
1N929	2"	500	125	82	159	38	PN10	BSP
1N930	2 1/2"	460	125	86	159	44	PN10	BSP
1N931	3"	396	125	86	159	51	PN10	BSP



## ITEM 18N | Netvitc System adaptor, F/T

1N932	4"	477	125	86	159	62	<b>PN10</b>	BSP
1N933	3"	647	140	84	177	37	<b>PN10</b>	BSP
1N934	3"	990	160	86	201	51	<b>PN10</b>	BSP



## Product Documents



## Product Certificates

## Company Certificates

