



Netvitc System pressure fittings

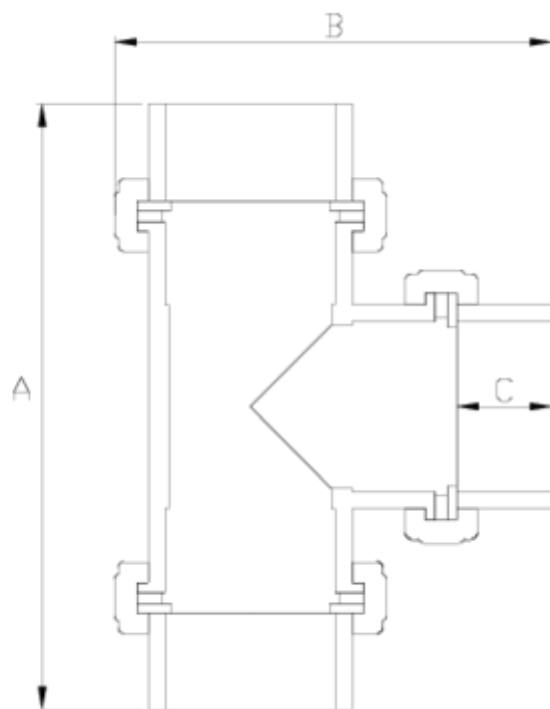
W/F PVC Netvitc System 90°

tee

ITEM 06N



| REFERENCE | DESCRIPTION | Net weight | Volumen (m ³) | Gross weight | Unidades lote |
|-----------|--|------------|---------------------------|--------------|---------------|
| 101N055 | NETVITC SYSTEME 90° TEE W/F 63 | 1,187 | 0,02457 | 5,07 | 4 |
| 101N057 | NETVITC SYSTEME 90° TEE W/F 90 | 1,61 | 0,06347 | 7,23 | 4 |
| 101N058 | NETVITC SYSTEME 90° TEE W/F 110 | 4,358275 | 0,06347 | 18,22 | 4 |
| 101N059 | NETVITC SYSTEME 90° TEE W/F 125 | 5,67 | 0,08678 | 12,36 | 2 |
| 101N060 | PVC SNS TEE 90° W/FLANGES SOLVENT SOCKET/O 140 | 6,2 | 0,04836 | 7,12 | 1 |
| 101N061 | NETVITC SYSTEM 90° TEE W/F 160 | 10,1044 | 0,04836 | 10,7695 | 1 |
| 101N062 | NETVITC SYSTEM 90° TEE W/F 200 | 16,6395 | 0,16000 | 18,767 | 1 |



ITEM 06N | W/F PVC Netvitec System 90° tee

| CÓDIGO | Ø | PESO | BRIDA | A | B | C | PN | MEDIDA |
|--------|-----|-------|-------|-----|-------|-----|------|---------|
| 1N055 | 63 | 1187 | 63 | 222 | 180.5 | 36 | PN10 | MÉTRICO |
| 1N057 | 90 | 1610 | 90 | 323 | 244 | 52 | PN10 | MÉTRICO |
| 1N058 | 110 | 4358 | 110 | 385 | 288 | 61 | PN10 | MÉTRICO |
| 1N059 | 125 | 5670 | 125 | 446 | 323.5 | 69 | PN10 | MÉTRICO |
| 1N060 | 140 | 6200 | 140 | 481 | 353 | 77 | PN10 | MÉTRICO |
| 1N061 | 160 | 9545 | 160 | 535 | 402.5 | 86 | PN10 | MÉTRICO |
| 1N062 | 200 | 16640 | 200 | 667 | 479 | 107 | PN10 | MÉTRICO |



Product Documents



Product Certificates

Company Certificates

