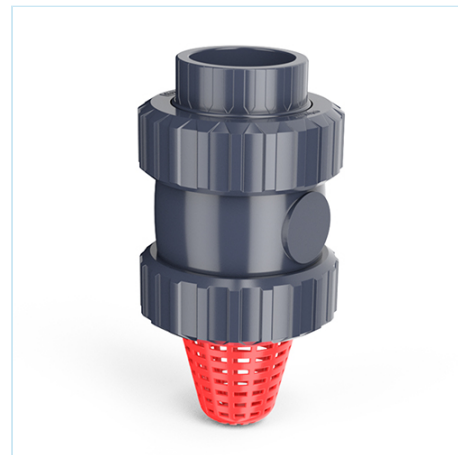




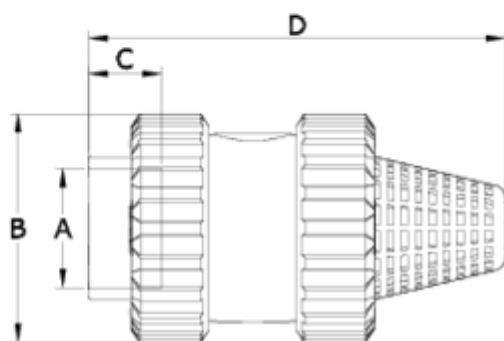
## PVC check valves (with spring)

# Solvent socket outlet - Foot - FPM seal

## ITEM 274



REFERENCE	DESCRIPTION	Net weight	Volumen (m <sup>3</sup> )	Gross weight	Unidades lote
1016601	PVC FOOT CHECK V. (W/SPRING) S. SOCK 20 FPM	0,124	0,01553	5,2	40
1016602	PVC FOOT CHECK V. (W/SPRING) S. SOCK 25 FPM	0,16	0,02244	6,94	40
1016603	PVC FOOT CHECK V. (W/SPRING) S. SOCK 32 FPM	0,267743	0,02244	8,52	30
1016604	PVC FOOT CHECK V. (W/SPRING) S. SOCK 40 FPM	0,435	0,02244	9,24	20
1016605	PVC FOOT CHECK V. (W/SPRING) S. SOCK 50 FPM	0,65	0,02244	8,34	12
1016606	PVC FOOT CHECK V. (W/SPRING) S. SOCK 63 FPM	1,0437	0,04836	13,19	12
1016607	PVC FOOT CHECK V. (W/SPRING) S. SOCK 75 FPM	2,2	0,03129	9,36	4
1016608	PVC FOOT CHECK V. (W/SPRING) S. SOCK 90 FPM	3,31925	0,03129	7,255	2
1016679	PVC FOOT CHECK V. (W/SPRING) S. SOCK 90-110 FPM	3,5418	0,03129	7,7	2

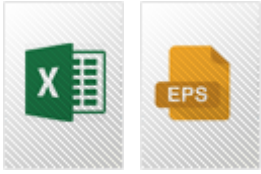


## ITEM 274 | Solvent socket outlet - Foot - FPM seal

Código Vitón	A	Peso	B	C	D	PN	MEDIDA
16601	20	123	52	17	104	PN16	MÉTRICO
16602	25	160	59	19	116	PN16	MÉTRICO
16603	32	266	69	24	145	PN16	MÉTRICO
16604	40	435	85	26	163	PN16	MÉTRICO
16605	50	650	99	31	173	PN16	MÉTRICO
16606	63	1000	116	38	206	PN16	MÉTRICO
16607	75	2500	150	44	269	PN10	MÉTRICO
16608	90	4000	178	51	312	PN10	MÉTRICO
16679	110	4235	178	61	325	PN10	MÉTRICO



## Product Documents



## Product Certificates

## Company Certificates

