



PVC-U pressure fittings

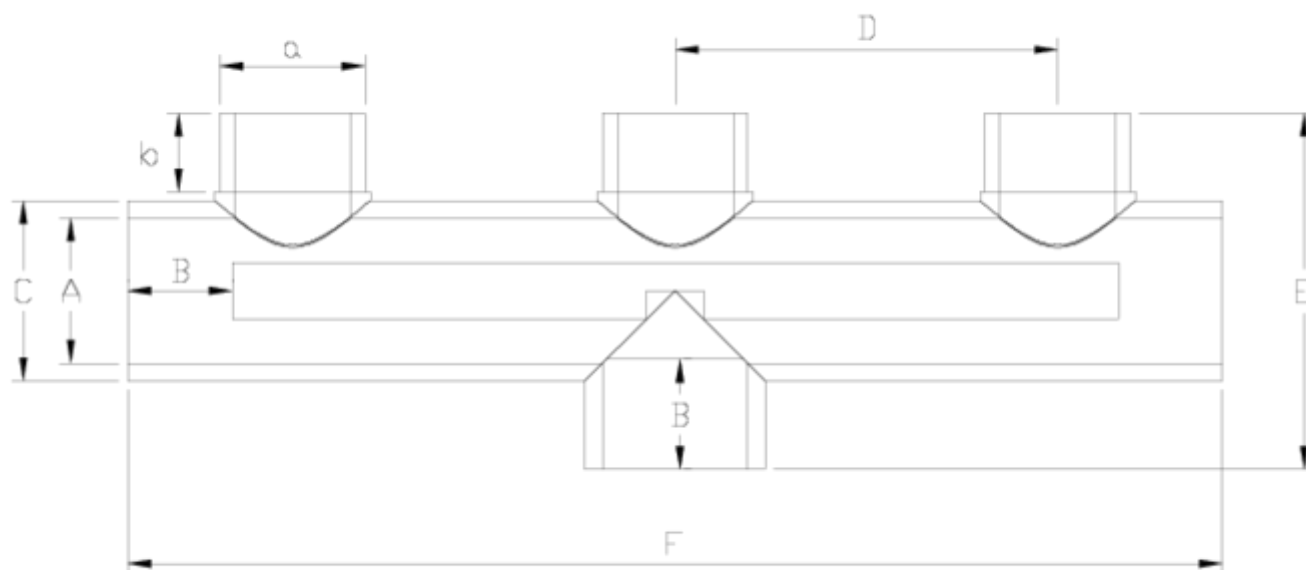
3-channel manifold - white

range

ITEM 408



| REFERENCE | DESCRIPTION | Net weight | Volumen (m ³) | Gross weight | Unidades lote |
|-----------|----------------------------|------------|---------------------------|--------------|---------------|
| 1001278 | PVC MANIFOLD 32 - WHITE | 0,47 | 0,04460 | 5,3658 | 10 |
| 1001280 | PVC MANIFOLD 50 - WHITE | 0,810775 | 0,01553 | 3,625 | 4 |
| 1001281 | PVC MANIFOLD 63 - WHITE | 1,440675 | 0,01553 | 6,165 | 4 |
| 1001282 | PVC MANIFOLD 50-63 - WHITE | 1,025 | 0,01553 | 4,34 | 4 |
| 1001447 | 3-WAY MANIFOLD 50 WHITE | 0,7158 | 0,03648 | 3,12 | 4 |
| 1001448 | 3-WAY MANIFOLD 50-63 WHITE | 0 | 0,02243 | 0 | 4 |
| 1001449 | 3-WAY MANIFOLD 63 WHITE | 0 | 0,04460 | 0 | 4 |



ITEM 408 | 3-channel manifold - white range

| Código | a-A | Peso (g) | b | B | C | D | E | F | PN | MEDIDA |
|--------|-------|----------|----|-----|----|-----|-----|-----|------|---------|
| 01278 | 32 | 470 | 22 | 22 | 40 | 115 | 88 | 308 | PN16 | MÉTRICO |
| 01280 | 50 | 677 | 26 | 34 | 61 | 131 | 123 | 393 | PN16 | MÉTRICO |
| 01282 | 50-63 | 725 | 26 | 38* | 61 | 131 | 128 | 393 | PN16 | MÉTRICO |
| 01281 | 63 | 1143 | 26 | 38 | 75 | 165 | 151 | 460 | PN16 | MÉTRICO |



Product Documents



Product Certificates



Company Certificates

