



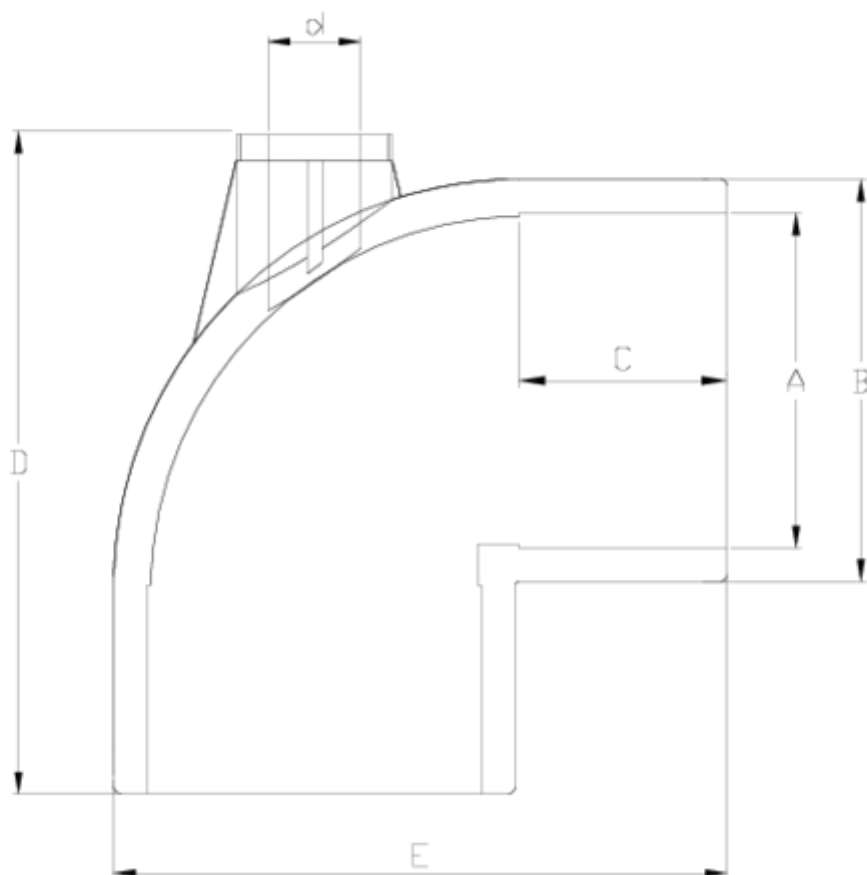
## PVC-U pressure fittings

# "AIR" 90° elbow, female threaded outlet

### ITEM 429



REFERENCE	DESCRIPTION	Net weight	Volumen (m <sup>3</sup> )	Gross weight	Unidades lote
1001256	"AIR" 90° ELBOW SOLV. SOCKET 50-1/2"	0,175243	0,02244	5,961	30
1001590	"AIR" 90° ELBOW SOLV. SOCKET 50-3/4"	0,17091	0,02244	5,615	30
1001257	"AIR" 90° ELBOW SOLV. SOCKET 63-1/2"	0,300462	0,03129	8,385	26
1001591	"AIR" 90° ELBOW SOLV. SOCKET 63-3/4"	0,28	0,03129	8,035	26
1001258	"AIR" 90° ELBOW SOLV. SOCKET 75-1/2"	0,5	0,04717	13,1418	25
1001592	"AIR" 90° ELBOW SOLV. SOCKET 75-3/4"	0,491728	0,04717	12,935	25
1001259	"AIR" 90° ELBOW SOLV. SOCKET 90 3/4"	0,8262	0,03129	8,923	10
1001260	"AIR" 90° ELBOW SOLV. SOCKET 90-1"	0,762	0,03129	8,259	10
1001261	"AIR" 90° ELBOW SOLV. SOCKET 110-1"	1,31097	0,04880	13,685	10
1001262	"AIR" 90° ELBOW SOLV. SOCKET 125-1"	1,9397	0,04717	12,28	6
1001263	"AIR" 90° ELBOW SOLV. SOCKET 125-2"	1,747417	0,06149	11,6837	6
1001264		2,425	0,06347	15,4705	6
1001265		2,448	0,06347	15,6085	6
1001267	"AIR" 90° ELBOW SOLV. SOCKET 160-2"	3,319875	0,06150	14,2	4
1001268	"AIR" 90° ELBOW SOLV. SOCKET 200-2"	4,95655	0,06347	10,7	2
1001593	"AIR" 90° ELBOW SOLV. SOCKET 250-2"	9,83	0,06347	10,91	1
1001594	"AIR" 90° ELBOW SOLV. SOCKET 250-3"	9,735	0,06347	10,5	1



## ITEM 429 | "AIR" 90° elbow, female threaded outlet

Código	A	d	Peso (g)	B	C	D	E	PN	MEDIDA
01256	50	1/2"	148	61	31	100	88	PN16	MÉTRICO
01590	50	3/4"	146	61	31	100	88	PN16	MÉTRICO
01257	63	1/2"	235	76	38	120	109	PN16	MÉTRICO
01591	63	3/4"	233	76	38	120	109	PN16	MÉTRICO
01258	75	1/2"	455	90	44	140	130	PN16	MÉTRICO
01592	75	3/4"	452	90	44	140	130	PN16	MÉTRICO
01259	90	3/4"	812	108	51	175	151	PN16	MÉTRICO
01261	110	1"	1278	131	61	206	184	PN16	MÉTRICO
01262	125	1"	1645	143	63	234	210	PN16	MÉTRICO
01263	125	2"	1628	143	69	234	210	PN16	MÉTRICO



## ITEM 429 | "AIR" 90° elbow, female threaded outlet

01264	140	1"	2653	164	78	265	234	<b>PN16</b>	MÉTRICO
01265	140	2"	2480	164	78	265	234	<b>PN16</b>	MÉTRICO
01267	160	2"	2443	182	86	297	265	<b>PN10</b>	MÉTRICO
01268	200	2"	4920	225	106	340	320	<b>PN10</b>	MÉTRICO
01593	250	2"	9830	399	284	131	430	<b>PN10</b>	MÉTRICO
01594	250	3"	9735	399	284	131	430	<b>PN10</b>	MÉTRICO



## Product Documents



## Product Certificates



## Company Certificates

