



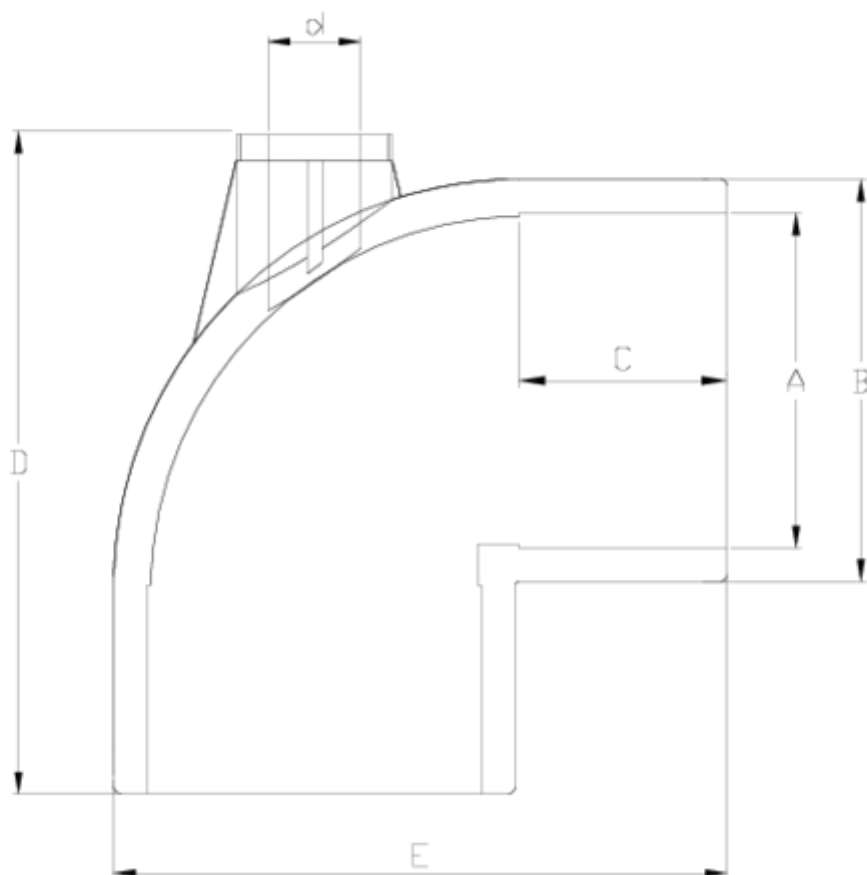
## PVC-U pressure fittings

# 'AIR' 90° elbow, solvent socket outlet

## ITEM 623



REFERENCE	DESCRIPTION	Net weight	Volumen (m <sup>3</sup> )	Gross weight	Unidades lote
1001627	"AIR" 90° ELBOW S. SOCKET OUTLET 50-25	0,167777	0,02244	5,521	30
1001628	"AIR" 90° ELBOW S. SOCKET OUTLET 63-25	0,289233	0,03129	9,25	30
1001629	"AIR" 90° ELBOW S. SOCKET OUTLET 75-25	0,480128	0,04717	12,645	25
1001630	"AIR" 90° ELBOW S. SOCKET OUTLET 50-20	0,17391	0,02244	5,705	30
1001631	"AIR" 90° ELBOW S. SOCKET OUTLET 63-20	0,299692	0,03129	8,365	26
1001632	"AIR" 90° ELBOW S. SOCKET OUTLET 75-20	0,506128	0,04717	13,295	25
1001633	"AIR" 90° ELBOW S. SOCKET OUTLET 90-25	0,79432	0,04717	8,585	10
1001635	"AIR" 90° ELBOW S. SOCKET OUTLET 110-32	1,25132	0,04717	13,155	10
1001636	"AIR" 90° ELBOW S. SOCKET OUTLET 125-32	1,931	0,04717	12,21	6
1001637	"AIR" 90° ELBOW S. SOCKET OUTLET 125-63	1,711367	0,04717	10,91	6
1001639	"AIR" 90° ELBOW S. SOCKET OUTLET 160-63	3,2774	0,06150	14,03	4
1001640	"AIR" 90° ELBOW S. SOCKET OUTLET 200-63	4,894	0,06347	10,618	2



## ITEM 623 | 'AIR' 90° elbow, solvent socket outlet

Código	A	d	Peso (g)	B	C	D	E	PN	MEDIDA
01630	50	20	145	61	31	100	88	PN16	MÉTRICO
01627	50	25	142	61	31	100	88	PN16	MÉTRICO
01631	63	20	230	76	38	120	109	PN16	MÉTRICO
01628	63	25	226	76	38	120	109	PN16	MÉTRICO
01632	75	20	450	90	44	140	130	PN16	MÉTRICO
01629	75	25	445	90	44	140	130	PN16	MÉTRICO
01633	90	25	806	108	51	175	151	PN16	MÉTRICO
01635	110	32	1255	131	61	206	184	PN16	MÉTRICO
01636	125	32	1635	143	69	234	210	PN16	MÉTRICO
01637	125	63	1602	143	69	234	210	PN16	MÉTRICO



## ITEM 623 | 'AIR' 90° elbow, solvent socket outlet

01639	160	63	2414	182	86	297	265	PN10	MÉTRICO
01640	200	63	4891	225	106	340	320	PN10	MÉTRICO



## Product Documents



## Product Certificates



## Company Certificates

