



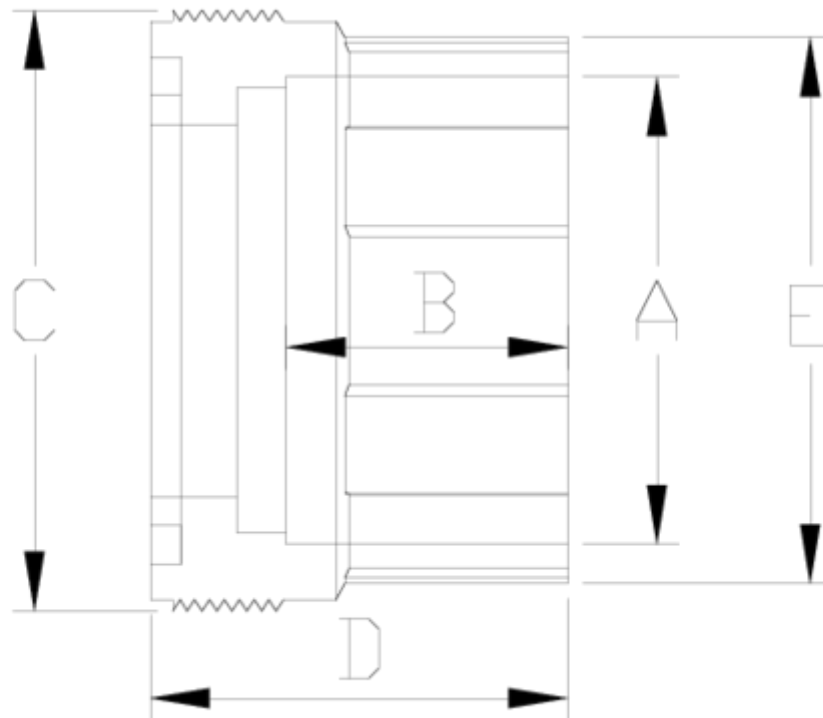
## PVC-U pressure fittings

# "BS" union, socket solvent

## ITEM 399

REFERENCE	DESCRIPTION	Net weight	Volumen (m <sup>3</sup> )	Gross weight	Unidades lote
1001985	UNION SOLV. SOCK. BS 1/2"	0,012	0,00473	0,35	20
1001986	UNION SOLV. SOCK. BS 3/4"	0,024	0,00473	0,59	20
1001987	UNION SOLV. SOCK. BS 1"	0,03	0,00473	0,71	20
1001988	UNION SOLV. SOCK. BS 1 1/4"	0,061	0,00473	0,6561	10
1001989	UNION SOLV. SOCK. BS 1 1/2"	0,089	0,00473	0,9361	10
1001990	UNION SOLV. SOCK. BS 2"	0,123	0,00473	1,2761	10





## ITEM 399 | "BS" union, socket solvent

Código	A	Peso (g)	B	C	D	E	PN	MEDIDA
01985	1/2"	12	16	33	26	28	PN16	BS
01986	3/4"	24	19	42	29	36	PN16	BS
01987	1"	30	22	48	32	42	PN16	BS
01988	1 1/4"	61	26	59	41	52	PN16	BS
01989	1 1/2"	89	31	66	46	59	PN16	BS
01990	2"	123	38	78	56	73	PN16	BS
01931	2 1/2"	225	44	89	61	85	PN16	BS



## Product Documents



## Product Certificates



## Company Certificates

