



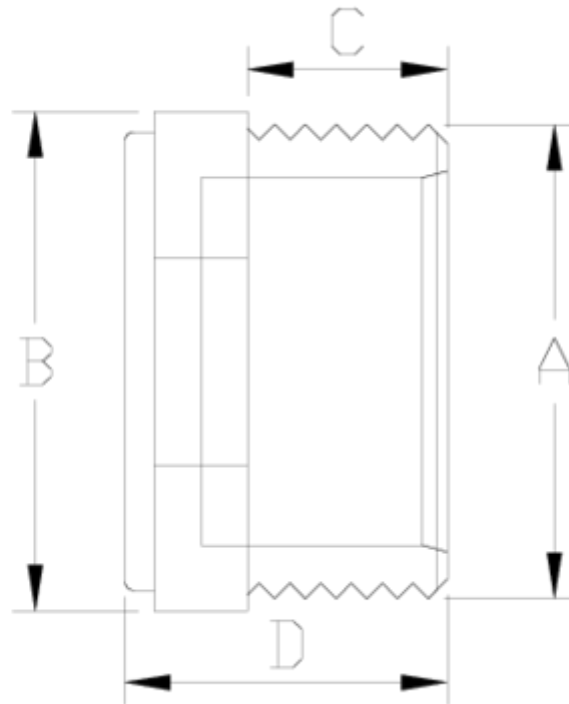
PVC-U pressure fittings

Male threaded cap - white range

ITEM 440



REFERENCE	DESCRIPTION	Net weight	Volumen (m ³)	Gross weight	Unidades lote
1002850	CAP MALE THREAD 1/2" - WHITE	0,0094	0,00472	0,894	80
1002851	CAP MALE THREAD 3/4" - WHITE	0,015	0,00472	1,168	70
1002852	CAP MALE THREAD 1" - WHITE	0,0244	0,00472	1,185	45
1002853	CAP MALE THREAD 1 1/4" - WHITE	0,0407	0,00891	2,642	60
1002854	CAP MALE THREAD 1 1/2" - WHITE	0,0587	0,00891	2,935	50
1002855	CAP MALE THREAD 2" - WHITE	0,112	0,01553	5,04	45



ITEM 440 | Male threaded cap - white range

Codigo	A	Peso (g)	B	C	D	PN	ROSCA
02850	1/2"	14	29	14	31	PN10	BSP
02851	3/4"	19	34	16	32	PN10	BSP
02852	1"	33	44	19	35	PN10	BSP
02853	1 1/4"	38	47	21	38	PN10	BSP
02854	1 1/2"	47	55	21	40	PN10	BSP
02855	2"	80	69	26	46	PN10	BSP



Product Documents



Product Certificates



Company Certificates

