



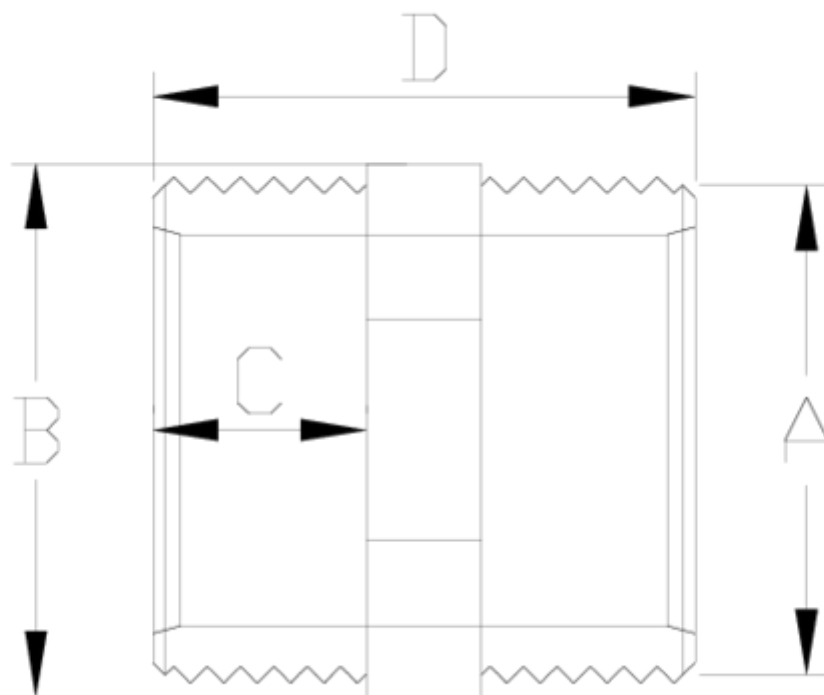
## PVC-U pressure fittings

# Male/male nipples

### ITEM 017

REFERENCE	DESCRIPTION	Net weight	Volumen (m <sup>3</sup> )	Gross weight	Unidades lote
1002401	NIPPLE MALE-MALE 1/2"-1/2"	0,013676	0,00472	1,49	100
1002402	NIPPLE MALE-MALE 3/4"-3/4"	0,02	0,00892	2,1874	100
1002403	NIPPLE MALE-MALE 1"-1"	0,04	0,01553	4,3267	100
1002404	NIPPLE MALE-MALE 1 1/4"-1 1/4"	0,053923	0,02244	5,88	100
1002405	NIPPLE MALE-MALE 1 1/2"-1 1/2"	0,070523	0,02244	7,54	100
1002406	NIPPLE MALE-MALE 2"-2"	0,125	0,02244	6,7377	50
1002407	NIPPLE MALE-MALE 2 1/2"- 2 1/2"	0,171233	0,03129	5,71	30
1002408	NIPPLE MALE-MALE 3"-3"	0,24	0,01553	2,8877	10
1002409	NIPPLE MALE-MALE 4"-4"	0,41	0,01553	2,7867	6





## ITEM 017 | Male/male nipples

Codigo	A	Peso (g)	B	C	D	PN	ROSCA
02401	1/2"	14	29	11	40	PN10	BSP
02402	3/4"	21	34	16	44	PN10	BSP
02403	1"	37	44	19	50	PN10	BSP
02404	1 1/4"	54	50	21	55	PN10	BSP
02405	1 1/2"	71	60	22	57	PN10	BSP
02406	2"	108	70	26	65	PN10	BSP
02407	2 1/2"	175	80	31	75	PN10	BSP
02408	3"-3"	320	108	33	81	PN10	BSP
02409	4"-4"	510	135	38	91	PN10	BSP



## Product Documents



## Product Certificates



## Company Certificates

