



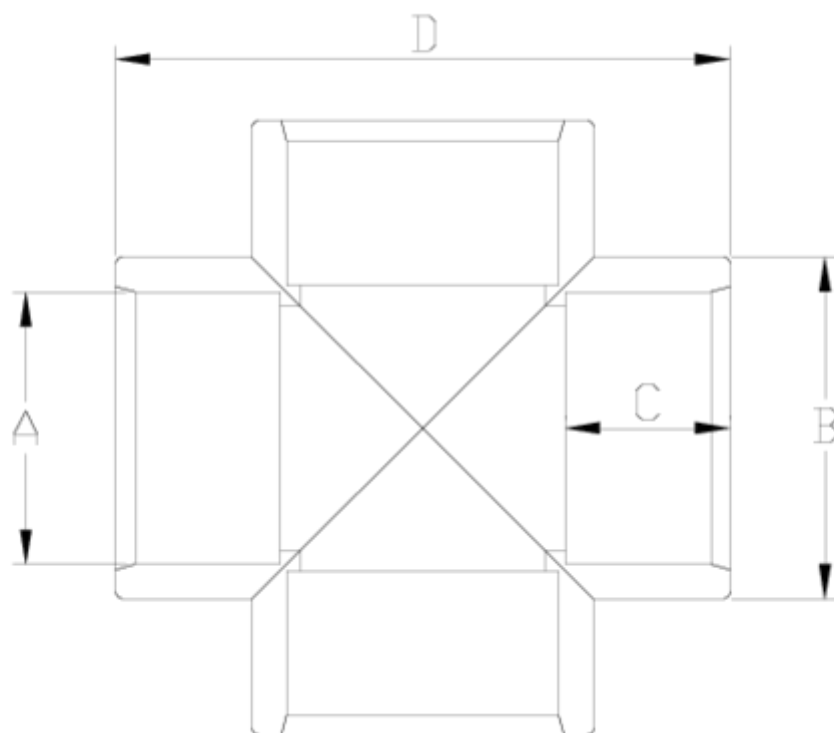
## PVC-U pressure fittings

# Plain 90° cross

### ITEM 015

REFERENCE	DESCRIPTION	Net weight	Volumen (m <sup>3</sup> )	contenido.peso bruto	Unidades lote
1001244	90° CROSS 40	0.146716	0.036816	7.885	50
1001245	90° CROSS 50	0.217402	0.063473	11.657	50
1001246	90° CROSS 63	0.391924	0.063473	10.585	25
1001247	90° CROSS 75	0.6114	0.048799	10.3577	16
1001248	90° CROSS 90	1.1665	0.061499	12.585	10
1001249	90° CROSS 110	1.8479	0.061499	10.16	5
1001250	90° CROSS 125	2.289875	0.061499	10.08	4
1001251	90° CROSS 140	3.417	0.03682	7.38	2
1001252	90° CROSS 160	4.29235	0.048799	9.16	2
1001253	90° CROSS 200	7.3531	0.063473	8.14	1
1001311	90° CROSS 20	0.040983	0.015532	4.425	100
1001312	90° CROSS 25	0.054373	0.022435	5.925	100
1001313	90° CROSS 32	0.092588	0.031294	7.98	80





## ITEM 015 | Plain 90° cross

Código	A	Peso (g)	B	C	D	PN	MEDIDA
01311	20	34	27	16	56	PN16	MÉTRICO
01312	25	67	33	19	66	PN16	MÉTRICO
01313	32	112	41	22	82	PN16	MÉTRICO
01244	40	169	50	26	98	PN16	MÉTRICO
01245	50	288	63	31	121	PN16	MÉTRICO
01246	63	495	75	38	160	PN16	MÉTRICO
01247	75	670	89	44	166	PN16	MÉTRICO
01248	90	1142	108	51	203	PN16	MÉTRICO
01249	110	1812	131	61	240	PN16	MÉTRICO
01250	125	2311	145	69	277	PN16	MÉTRICO



## ITEM 015 | Plain 90° cross

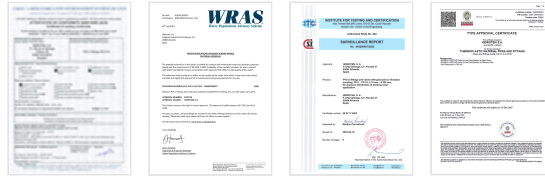
01251	140	3200	164	76	305	<b>PN16</b>	MÉTRICO
01252	160	4220	183	86	348	<b>PN10</b>	MÉTRICO
01253	200	6850	225	106	408	<b>PN10</b>	MÉTRICO



## Product Documents



## Product Certificates



## Company Certificates

