



## PVC-U pressure fittings

# Reducing bush

### ITEM 021

| REFERENCE | DESCRIPTION             | Net weight | Volumen (m <sup>3</sup> ) | Gross weight | Unidades lote |
|-----------|-------------------------|------------|---------------------------|--------------|---------------|
| 1001061   | REDUCING BUSHES 25-20   | 0,004799   | 0,00473                   | 0,605        | 100           |
| 1001062   | REDUCING BUSHES 32-25   | 0,009529   | 0,00473                   | 1,07         | 100           |
| 1001063   | REDUCING BUSHES 40-32   | 0,016011   | 0,00473                   | 1,398        | 80            |
| 1001064   | REDUCING BUSHES 50-40   | 0,029823   | 0,00892                   | 2,275        | 70            |
| 1001065   | REDUCING BUSHES 63-50   | 0,061161   | 0,01553                   | 4,608        | 70            |
| 1001066   | REDUCING BUSHES 75-63   | 0,079446   | 0,02244                   | 4,46         | 50            |
| 1001067   | REDUCING BUSHES 90-75   | 0,135221   | 0,02244                   | 4,95         | 33            |
| 1001068   | REDUCING BUSHES 110-90  | 0,264072   | 0,02243                   | 5,08         | 18            |
| 1001069   | REDUCING BUSHES 125-110 | 0,276108   | 0,01553                   | 3,64         | 12            |
| 1001070   | REDUCING BUSHES 140-125 | 0,32833    | 0,01553                   | 3,61         | 10            |
| 1001071   | REDUCING BUSHES 160-140 | 0,553083   | 0,03129                   | 7,21         | 12            |
| 1001072   | REDUCING BUSHES 200-160 | 1,67797    | 0,04880                   | 17,355       | 10            |
| 1001100   | REDUCING BUSHES 225-200 | 0,8245     | 0,01553                   | 1,745        | 1             |
| 1001101   | REDUCING BUSHES 250-225 | 1,6433     | 0,01553                   | 1,97         | 1             |
| 1001102   | REDUCING BUSHES 315-250 | 6,72       | 0,03682                   | 7,2692       | 1             |
| 1001122   | REDUCING BUSHES 140-90  | 0,63083    | 0,01553                   | 6,635        | 10            |
| 1001123   | REDUCING BUSHES 140-110 | 0,59433    | 0,01553                   | 6,27         | 10            |
| 1001124   | REDUCING BUSHES 160-90  | 0,942667   | 0,03129                   | 11,885       | 12            |
| 1001125   | REDUCING BUSHES 160-110 | 0,830167   | 0,03129                   | 10,535       | 12            |
| 1001126   | REDUCING BUSHES 160-125 | 0,90725    | 0,03129                   | 11,46        | 12            |
| 1001127   | REDUCING BUSHES 200-110 | 1,80347    | 0,04880                   | 18,61        | 10            |
| 1001128   | REDUCING BUSHES 200-125 | 1,85197    | 0,04880                   | 19,095       | 10            |
| 1001129   | REDUCING BUSHES 200-140 | 1,82327    | 0,04880                   | 18,808       | 10            |





## PVC-U pressure fittings

# Reducing bush

### ITEM 021

| REFERENCE | DESCRIPTION             | Net weight | Volumen (m <sup>3</sup> ) | contenido.Peso bruto | Unidades lote |
|-----------|-------------------------|------------|---------------------------|----------------------|---------------|
| 1001130   | REDUCING BUSHES 250-160 | 3,7633     | 0,01553                   | 4,09                 | 1             |
| 1001131   | REDUCING BUSHES 250-200 | 3,3083     | 0,01553                   | 3,635                | 1             |
| 1001132   | REDUCING BUSHES 315-200 | 7,7496     | 0,03682                   | 8,2988               | 1             |
| 1001133   | REDUCING BUSHES 315-225 | 5,9146     | 0,04117                   | 6,555                | 1             |
| 1001144   | REDUCING BUSHES 20-16   | 0,002733   | 0,00473                   | 0,535                | 150           |
| 1001170   | REDUCING BUSHES 32-20   | 0,011479   | 0,00473                   | 1,265                | 100           |
| 1001171   | REDUCING BUSHES 40-20   | 0,021099   | 0,00473                   | 1,801                | 80            |
| 1001172   | REDUCING BUSHES 40-25   | 0,022411   | 0,00473                   | 1,91                 | 80            |
| 1001173   | REDUCING BUSHES 50-20   | 0,03268    | 0,00892                   | 2,475                | 70            |
| 1001174   | REDUCING BUSHES 50-25   | 0,035323   | 0,00892                   | 2,66                 | 70            |
| 1001175   | REDUCING BUSHES 50-32   | 0,038609   | 0,00892                   | 2,89                 | 70            |
| 1001178   | REDUCING BUSHES 63-32   | 0,073261   | 0,01553                   | 5,455                | 70            |
| 1001179   | REDUCING BUSHES 63-40   | 0,077404   | 0,01553                   | 5,745                | 70            |
| 1001183   | REDUCING BUSHES 75-40   | 0,119146   | 0,02244                   | 6,445                | 50            |
| 1001184   | REDUCING BUSHES 75-50   | 0,120146   | 0,02244                   | 6,495                | 50            |
| 1001189   | REDUCING BUSHES 90-50   | 0,178706   | 0,02244                   | 6,385                | 33            |
| 1001190   | REDUCING BUSHES 90-63   | 0,165373   | 0,02244                   | 5,945                | 33            |
| 1001196   | REDUCING BUSHES 110-63  | 0,308239   | 0,02243                   | 5,875                | 18            |
| 1001197   | REDUCING BUSHES 110-75  | 0,3227     | 0,02243                   | 6,135                | 18            |
| 1001198   | REDUCING BUSHES 125-75  | 0,494442   | 0,01553                   | 6,26                 | 12            |
| 1001199   | REDUCING BUSHES 125-90  | 0,428192   | 0,01553                   | 5,465                | 12            |
| 1001308   | REDUCING BUSHES 400-250 | 11,63      | 0,02640                   | 11,63                | 1             |
| 1001309   | REDUCING BUSHES 400-315 | 13,675     | 0,03610                   | 13,675               | 1             |





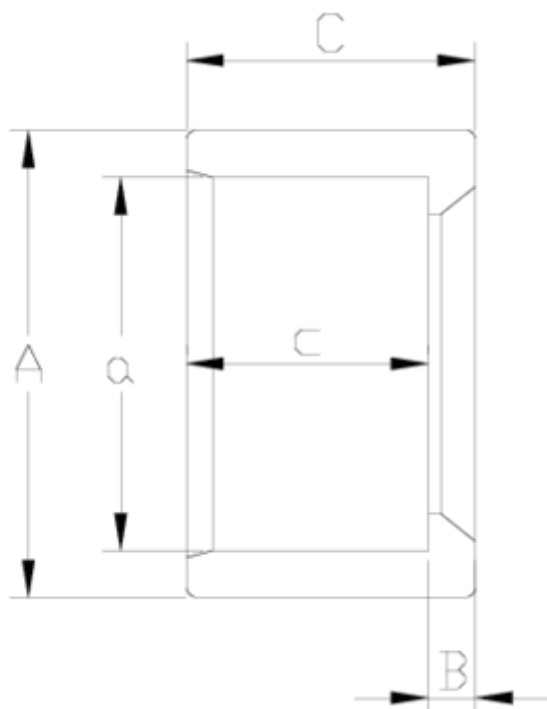
## PVC-U pressure fittings

# Reducing bush

### ITEM 021

| REFERENCE | DESCRIPTION             | Net weight | Volumen (m <sup>3</sup> ) | contenido.Peso bruto | Unidades lote |
|-----------|-------------------------|------------|---------------------------|----------------------|---------------|
| 1001310   | REDUCING BUSHES 355-315 | 5,395      | 0,04117                   | 6,05                 | 1             |





## ITEM 021 | Reducing bush

| Codigo | A-a   | Peso (g) | B        | c  | C  | PN   | MEDIDA  |
|--------|-------|----------|----------|----|----|------|---------|
| 01144  | 20/16 | 4        | 2        | 14 | 16 | PN16 | MÉTRICO |
| 01061  | 25/20 | 5        | 3        | 16 | 19 | PN16 | MÉTRICO |
| 01170  | 32/20 | 12       | 6        | 16 | 22 | PN16 | MÉTRICO |
| 01062  | 32/25 | 10       | 6        | 19 | 22 | PN16 | MÉTRICO |
| 01171  | 40/20 | 21       | 10       | 16 | 26 | PN16 | MÉTRICO |
| 01172  | 40/25 | 22       | 7        | 19 | 26 | PN16 | MÉTRICO |
| 01063  | 40/32 | 15       | 4        | 22 | 26 | PN16 | MÉTRICO |
| 01173  | 50/20 | 33       | =F10-E10 | 16 | 31 | PN16 | MÉTRICO |
| 01174  | 50/25 | 35       | =F11-E11 | 19 | 31 | PN16 | MÉTRICO |
| 01175  | 50/32 | 39       | =F12-E12 | 22 | 31 | PN16 | MÉTRICO |



## ITEM 021 | Reducing bush

|       |         |      |          |    |     |      |         |
|-------|---------|------|----------|----|-----|------|---------|
| 01064 | 50/40   | 30   | =F13-E13 | 26 | 31  | PN16 | MÉTRICO |
| 01178 | 63/32   | 71   | 16       | 22 | 38  | PN16 | MÉTRICO |
| 01179 | 63/40   | 77   | =F15-E15 | 26 | 38  | PN16 | MÉTRICO |
| 01065 | 63/50   | 57   | =F16-E16 | 31 | 38  | PN16 | MÉTRICO |
| 01183 | 75/40   | 119  | =F17-E17 | 26 | 44  | PN16 | MÉTRICO |
| 01184 | 75/50   | 118  | =F18-E18 | 32 | 44  | PN16 | MÉTRICO |
| 01066 | 75/63   | 79   | =F19-E19 | 38 | 44  | PN16 | MÉTRICO |
| 01189 | 90/50   | 177  | 20       | 32 | 51  | PN16 | MÉTRICO |
| 01190 | 90/63   | 164  | 13       | 39 | 51  | PN16 | MÉTRICO |
| 01067 | 90/75   | 135  | =F22-E22 | 44 | 52  | PN16 | MÉTRICO |
| 01196 | 110/63  | 296  | =F23-E23 | 39 | 61  | PN16 | MÉTRICO |
| 01197 | 110/75  | 315  | =F24-E24 | 44 | 61  | PN16 | MÉTRICO |
| 01068 | 110/90  | 250  | =F25-E25 | 51 | 61  | PN16 | MÉTRICO |
| 01198 | 125/75  | 385  | =F26-E26 | 44 | 69  | PN16 | MÉTRICO |
| 01199 | 125/90  | 415  | =F27-E27 | 51 | 69  | PN16 | MÉTRICO |
| 01069 | 125/110 | 273  | =F28-E28 | 61 | 69  | PN16 | MÉTRICO |
| 01122 | 140/90  | 512  | =F29-E29 | 51 | 76  | PN16 | MÉTRICO |
| 01123 | 140/110 | 560  | =F30-E30 | 61 | 76  | PN16 | MÉTRICO |
| 01070 | 140/125 | 317  | =F31-E31 | 69 | 76  | PN16 | MÉTRICO |
| 01124 | 160/90  | 605  | =F32-E32 | 51 | 86  | PN10 | MÉTRICO |
| 01125 | 160/110 | 685  | =F33-E33 | 61 | 86  | PN10 | MÉTRICO |
| 01126 | 160/125 | 765  | =F34-E34 | 69 | 86  | PN10 | MÉTRICO |
| 01071 | 160/140 | 518  | =F35-E35 | 76 | 86  | PN10 | MÉTRICO |
| 01127 | 200/110 | 2016 | =F36-E36 | 61 | 106 | PN10 | MÉTRICO |
| 01128 | 200/125 | 2050 | =F37-E37 | 69 | 106 | PN10 | MÉTRICO |
| 01129 | 200/140 | 1950 | =F38-E38 | 76 | 106 | PN10 | MÉTRICO |



## ITEM 021 | Reducing bush

|       |         |       |          |     |     |      |         |
|-------|---------|-------|----------|-----|-----|------|---------|
| 01072 | 200/160 | 1670  | =F39-E39 | 86  | 106 | PN10 | MÉTRICO |
| 01100 | 225/200 | 1416  | =F40-E40 | 106 | 119 | PN10 | MÉTRICO |
| 01130 | 250/160 | 1756  | =F41-E41 | 121 | 134 | PN10 | MÉTRICO |
| 01131 | 250/200 | 2724  | =F42-E42 | 106 | 135 | PN10 | MÉTRICO |
| 01101 | 250/225 | 2822  | =F43-E43 | 120 | 135 | PN10 | MÉTRICO |
| 01132 | 315/200 | 4336  | =F44-E44 | 131 | 164 | PN10 | MÉTRICO |
| 01133 | 315/225 | 7540  | =F45-E45 | 106 | 166 | PN10 | MÉTRICO |
| 01102 | 315/250 | 7900  | =F46-E46 | 120 | 166 | PN10 | MÉTRICO |
| 01310 | 355/315 | 5395  | 20       | 164 | 184 | PN6  | MÉTRICO |
| 01308 | 400/250 | 9700  | =F48-E48 | 131 | 205 | PN6  | MÉTRICO |
| 01309 | 400/315 | 11142 | =F49-E49 | 165 | 205 | PN6  | MÉTRICO |



## Product Documents



## Product Certificates



## Company Certificates

