

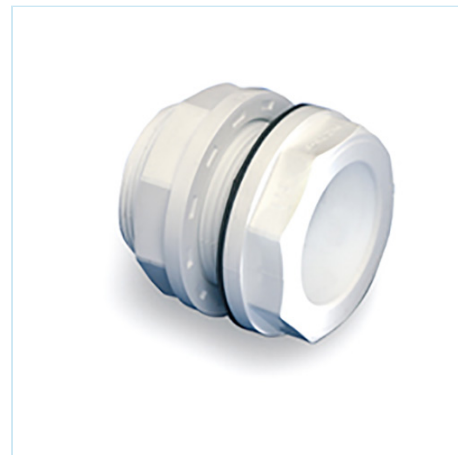


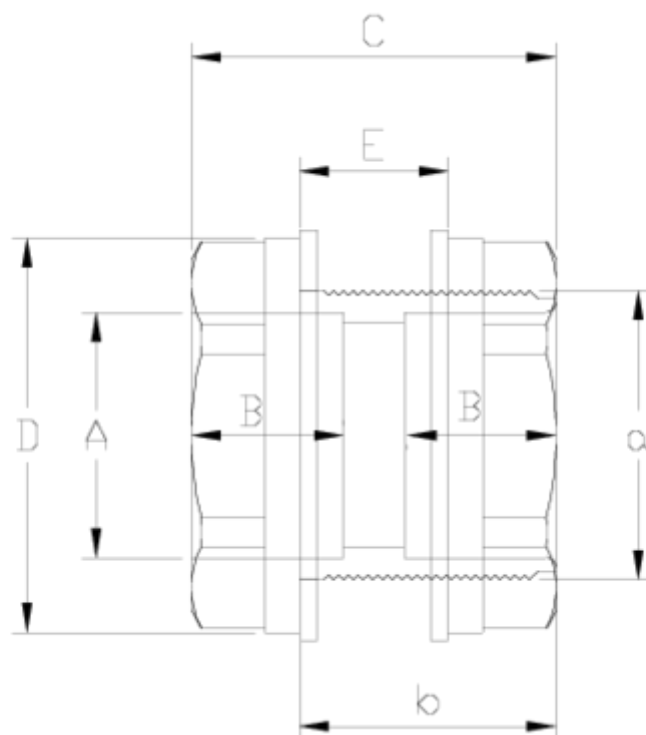
PVC-U pressure fittings

Tank adaptor - white range

ITEM 407

REFERENCE	DESCRIPTION	Net weight	Volumen (m ³)	Gross weight	Unidades lote
1002872	EPDM TANK ADAPTATOR 25-1" - WHITE	0,06912	0,00892	2,285	30
1002873	EPDM TANK ADAPTATOR 32-1 1/4" - WHITE	0,11801	0,01553	3,915	30
1002874	EPDM TANK ADAPTATOR 40-2" - WHITE	0,285788	0,00892	4,76	16
1002875	EPDM TANK ADAPTATOR 50-2" - WHITE	0,212975	0,00892	3,595	16
1002882	FPM TANK ADAPTATOR 25-1" - WHITE	0,068	0,00892	2,205	30
1002883	FPM TANK ADAPTATOR 32-1 1/4" - WHITE	0,124677	0,01553	4,115	30
1002884	FPM TANK ADAPTATOR 40-2" - WHITE	0,280475	0,00892	4,675	16
1002885	FPM TANK ADAPTATOR 50-2" - WHITE	0,196	0,00892	3,535	16





ITEM 407 | Tank adaptor - white range

Codigo	A-a	Peso (g)	DN	B	b	C	D	E	PN	ROSCA
02872	25 - 1"	76	20	19	47	62	50	38	PN10	BSP
02873	32 - 1 1/4"	112	25	21	53	69	64	33	PN10	BSP
02874	40 - 2"	275	32	26	53	74	81	30	PN10	BSP
02875	50 - 2"	208	40	31	53	74	81	30	PN10	BSP
02882	25 - 1"	76	20	19	47	62	50	38	PN10	BSP
02883	32 - 1 1/4"	112	25	21	53	69	64	33	PN10	BSP
02884	40 - 2"	275	32	26	53	74	81	30	PN10	BSP
02885	50 - 2"	208	40	31	53	74	81	30	PN10	BSP



Product Documents



Product Certificates



Company Certificates

