



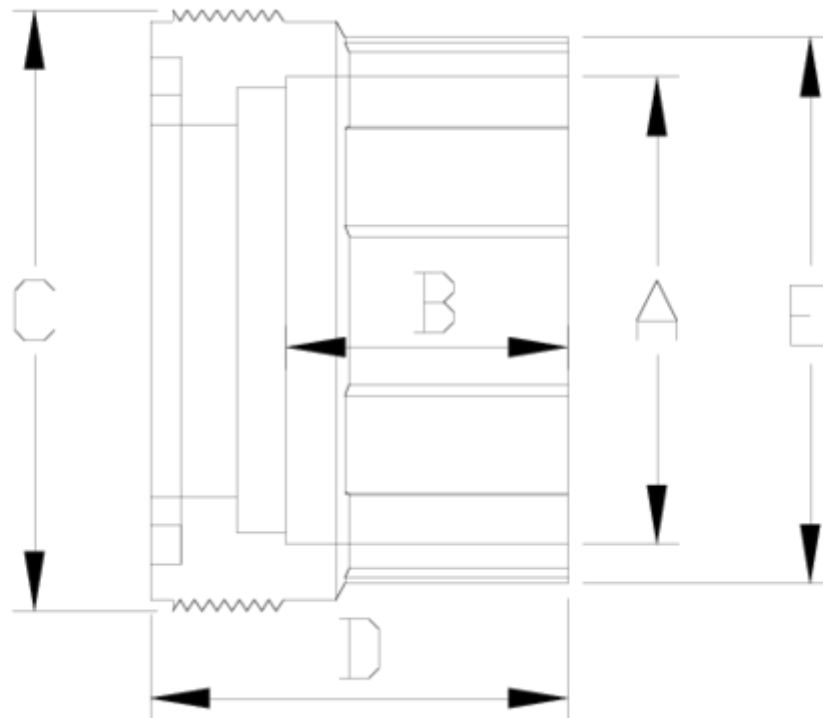
## PVC-U pressure fittings

# Union adaptor socket solvent

## ITEM 084

REFERENCE	DESCRIPTION	Net weight	Volumen (m <sup>3</sup> )	Gross weight	Unidades lote
1001925	UNION ADAPTOR SOC. SOLV. 20	0,012	0,00473	0,35	20
1001926	UNION ADAPTOR SOC. SOLV. 25	0,024545	0,00473	0,608	20
1001927	UNION ADAPTOR SOC. SOLV. 32	0,03	0,00473	0,71	20
1001928	UNION ADAPTOR SOC. SOLV. 40	0,061	0,00473	0,72	10
1001929	UNION ADAPTOR SOC. SOLV. 50	0,06879	0,00473	0,805	10
1001930	UNION ADAPTOR SOC. SOLV. 63	0,123	0,00473	1,34	10
1001931	UNION ADAPTOR SOC. SOLV. 75	0,22729	0,00473	2,39	10
1001932	UNION ADAPTOR SOC. SOLV. 90	0,3903	0,01553	2,6018	6
1001933	UNION ADAPTOR SOC. SOLV. 110	0,5978	0,02244	2,8187	4





## ITEM 084 | Union adaptor socket solvent

Código	A	Peso (g)	B	C	D	E	PN	MEDIDA
01925	20	12	16	33	26	28	PN16	MÉTRICO
01926	25	24	19	42	29	36	PN16	MÉTRICO
01927	32	30	22	48	32	42	PN16	MÉTRICO
01928	40	61	26	59	41	52	PN16	MÉTRICO
01929	50	89	31	66	46	59	PN16	MÉTRICO
01930	63	123	38	78	56	73	PN16	MÉTRICO
01931	75	225	44	89	61	85	PN16	MÉTRICO
01932	90	404	51	122	69	113	PN16	MÉTRICO
01933	110	602	61	145	79	134	PN16	MÉTRICO



## Product Documents



## Product Certificates



## Company Certificates

