



## PVC-U pressure fittings

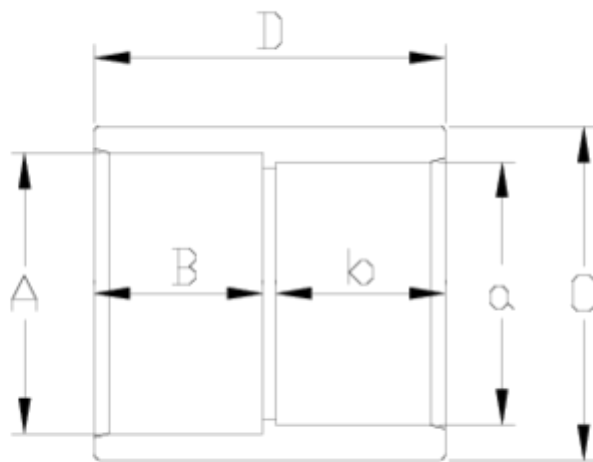
# Standard transition coupling

## BS-DIN

### ITEM 895

REFERENCE	DESCRIPTION	Net weight	Volumen (m <sup>3</sup> )	Gross weight	Unidades lote
1001900	TRANS. SOCKET DIN-BS 90-3"	0,456881	0,02280	7,665	16
1001901	TRANS. SOCKET DIN-BS 110-4"	0,698083	0,03129	8,95	12
1001903	TRANS. SOCKET DIN-BS 160-6"	1,410783	0,04879	9,04	6





## ITEM 895 | Standard transition coupling BS-DIN

Código	A-a	Peso (g)	B	C	c	D	PN	MEDIDA
01900	90-3"	495	108	51	51	108	PN10	BS-MÉTRICO
01901	110-4"	720	131	61	63	129	PN10	BS-MÉTRICO
01903	160-6"	1320	183	86	90	182	PN10	BS-MÉTRICO



## Product Documents



## Product Certificates



## Company Certificates

