

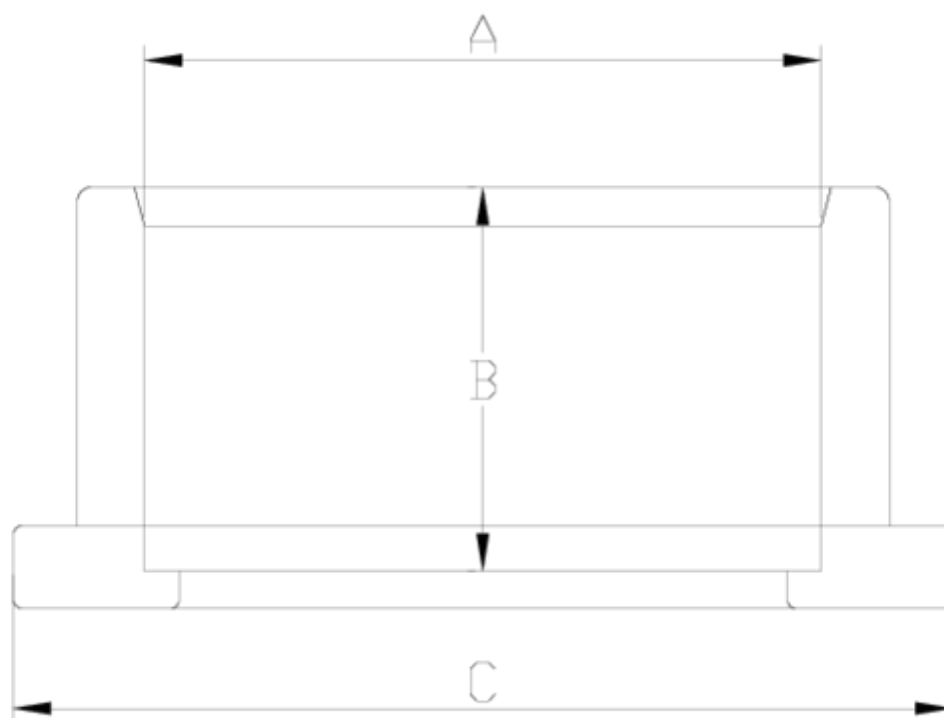


Flanges and adaptors

"BS" PVC plain adaptor ITEM 074

Ref.	Description	Net Weight	Vol. (m ³)	Gross Weight	Units Box
1010400	PORTABRIDA PLANO PVC"BS" 1 1/2"	0.064	0.00892	3.52	50
1010401	PORTABRIDA PLANO PVC"BS" 2"	0.129	0.02244	5.37	38
1010402	PORTABRIDA PLANO PVC"BS" 2 1/2"	0.190	0.03129	8.19	40
1010403	PORTABRIDA PLANO PVC"BS" 90-3"	0.308	0.03682	10.48	32
1010404	PORTABRIDA PLANO PVC"BS" 4"	0.481	0.06347	14.25	28
1010405	PORTABRIDA PLANO PVC"BS" 5"	0.597	0.08677	12.84	20
1010406	PORTABRIDA PLANO PVC"BS" 6"	0.986	0.04717	10.50	10
1010407	PORTABRIDA PLANO PVC"BS" 8"	0.781	0.08678	6.15	7





ITEM 074 | "BS" PVC plain adaptor

Código	A	Peso (g)	B	C	PN	MEDIDA
10400	1 1/2"	64	31	73	PN10	BS
10401	2"	112	38	90	PN10	BS
10402	2 1/2"	185	44	106	PN10	BS
10403	3"	275	51	125	PN10	BS
10404	4"	468	61	150	PN10	BS
10405	5"	597	69	168	PN10	BS
10406	6"	1180	86	213	PN10	BS
10407	8"	1785	106	247	PN10	BS



PRODUCT DOCUMENTS



PRODUCT CERTIFICATES

COMPANY CERTIFICATES

