



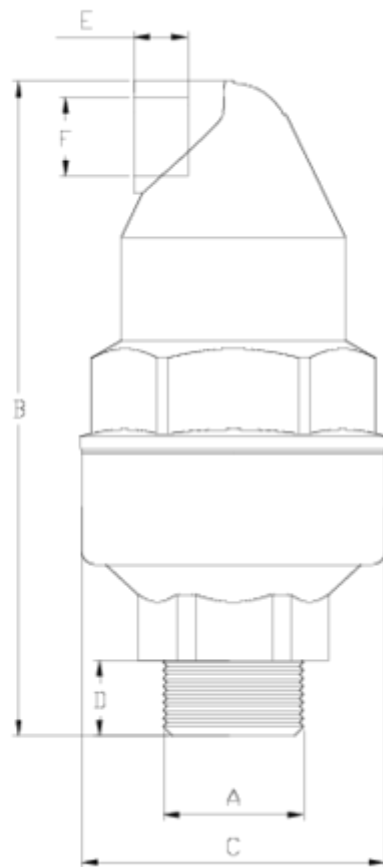
Ventouses Net®

Cinétique (C1) PA

ITEM 306

| RÉFÉRENCE | DESCRIPTION | Poids net | Volume (m ³) | Poids brut | Unités par lot |
|-----------|------------------------------------|-----------|--------------------------|------------|----------------|
| 1017501 | VENTOUSE NET® 1/2" PA DOUBLE EFFET | 0,285 | 0,02244 | 6,24 | 20 |
| 1017502 | VENTOUSE NET® 3/4" PA DOUBLE EFFET | 0,289 | 0,02244 | 6,32 | 20 |
| 1017503 | VENTOUSE NET® 1" PA DOUBLE EFFET | 0,3262 | 0,02244 | 7,012 | 20 |





ITEM 306 | Cinétique (C1) PA

| Código | f A | Peso (g) | B | C | D | E | F | Material | PN | TIPO ROSCA |
|--------|------|----------|-----|----|----|----|------|----------|------|------------|
| 17001 | 1/2" | 256.5 | 158 | 75 | 14 | 15 | 1/2" | PPFV | PN16 | BSP |
| 17002 | 3/4" | 260.1 | 160 | 75 | 16 | 15 | 1/2" | PPFV | PN16 | BSP |
| 17003 | 1" | 265.5 | 163 | 75 | 19 | 15 | 1/2" | PPFV | PN16 | BSP |
| 17501 | 1/2" | 281.2 | 158 | 75 | 14 | 15 | 1/2" | PA | PN25 | BSP |
| 17502 | 3/4" | 285.95 | 160 | 75 | 16 | 15 | 1/2" | PA | PN25 | BSP |
| 17503 | 1" | 291.65 | 163 | 75 | 19 | 15 | 1/2" | PA | PN25 | BSP |





Documentation Produit



Certifications de produits

Certificats d'entreprise

