

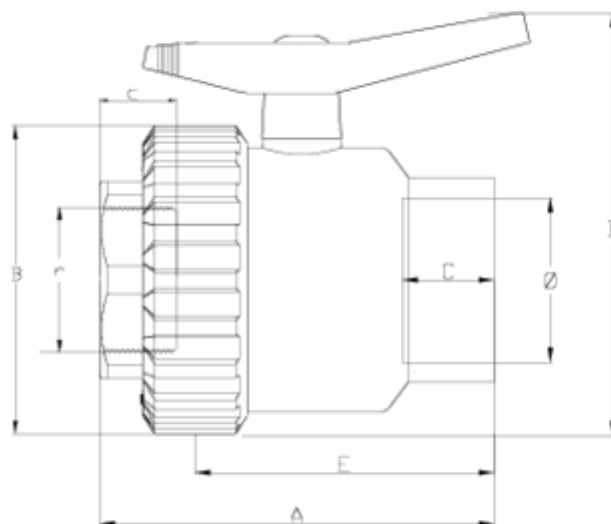


Vannes à boisseau "Semi compact"

Sortie à coller-taraudé ITEM 727

| Réf. | Description | P. Net | Vol. (m ³) | P. Brut | Lot |
|---------|--|--------|---------------------------|---------|-----|
| 111S015 | VÁLVULA SEMICOMPACTA S/ENC-RH 50- 1 1/2" | 0.671 | 0.03129 | 10.63 | 15 |
| 111S016 | VÁLVULA SEMICOMPACTA S/ENC-RH 63- 2" | 1.065 | 0.03682 | 11.20 | 10 |
| 111S017 | VÁLVULA SEMICOMPACTA S/ENC-RH 75- 2 1/2" | 2.017 | 0.03129 | 8.64 | 4 |
| 111S018 | VÁLVULA SEMICOMPACTA S/ENC-RH 90-3" | 3.424 | 0.02243 | 7.33 | 2 |
| 111S019 | VÁLVULA SEMICOMPACTA S/ENC-RH 110-4" | 4.518 | 0.04460 | 9.87 | 2 |





ITEM 727 | Sortie à coller-taraudé

| CÓDIGO PE | f-r | DN | PESO (g) | A | B | C | c | D | E | PN | TIPO ROSCA |
|-----------|-----------|-----|----------|-----|-----|----|----|-----|-----|------|------------|
| 11S015 | 50-1 1/2" | 40 | 671 | 150 | 99 | 31 | 34 | 148 | 112 | PN10 | BSP |
| 11S016 | 63-2" | 50 | 1065 | 163 | 120 | 38 | 30 | 171 | 127 | PN10 | BSP |
| 11S017 | 75-2 1/2" | 65 | 2017 | 227 | 151 | 45 | 36 | 221 | 159 | PN10 | BSP |
| 11S018 | 90-3" | 80 | 3424 | 227 | 176 | 51 | 36 | 242 | 181 | PN10 | BSP |
| 11S019 | 110-4" | 100 | 4518 | 260 | 208 | 61 | 40 | 307 | 209 | PN10 | BSP |



DOCUMENTS PRODUIT



CERTIFICATS DE PRODUIT

CERTIFICATS D'ENTREPRISE

