



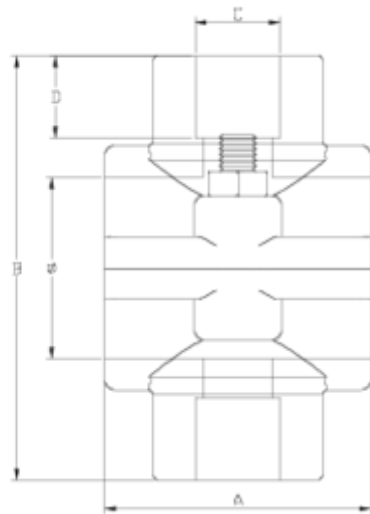
Clamp saddles

Double clamp saddle 2 screws

ITEM 130

REFERENCE	DESCRIPTION	Net weight	Volumen (m ³)	contenido.peso bruto	Unidades lote
1003125	COLLARIN TOMA DOBLE 32-1"	0.156	0.03129	9.90	60
1003151	COLLARIN TOMA DOBLE 20-1/2"	0.101	0.02244	8.58	80
1003152	COLLARIN TOMA DOBLE 20-3/4"	0.094	0.02244	8.10	80
1003200	COLLARIN TOMA DOBLE 25-1/2"	0.082	0.02244	7.23	80
1003201	COLLARIN TOMA DOBLE 25-3/4"	0.075	0.02244	6.55	80
1003202	COLLARIN TOMA DOBLE 32-1/2"	0.122	0.02244	7.99	60
1003203	COLLARIN TOMA DOBLE 32-3/4"	0.118	0.02244	7.92	60
1003204	COLLARIN TOMA DOBLE 40-1/2"	0.158	0.03129	8.59	50
1003205	COLLARIN TOMA DOBLE 40-3/4"	0.147	0.03129	7.90	50
1003206	COLLARIN TOMA DOBLE 40-1"	0.157	0.03129	8.40	50
1003207	COLLARIN TOMA DOBLE 50-1/2"	0.143	0.02244	7.06	45
1003208	COLLARIN TOMA DOBLE 50-3/4"	0.145	0.02244	7.10	45
1003209	COLLARIN TOMA DOBLE 50-1"	0.161	0.03129	7.93	45





ITEM 130 | Double clamp saddle 2 screws

Código	f tubo - C	Peso (g)	A	B	D	PN	TIPO ROSCA
03151	20 - 1/2"	66	43	63	16	PN16	BSP
03152	20 - 3/4"	68	43	63	17	PN16	BSP
03200	25 - 1/2"	82	45	71	16	PN16	BSP
03201	25 - 3/4"	75	45	71	17	PN16	BSP
03202	32 - 1/2"	115	49	84	16	PN16	BSP
03203	32 - 3/4"	118	49	84	17	PN16	BSP
03125	32 - 1"	168	59	92	21	PN16	BSP
03204	40 - 1/2"	144	59	92	16	PN16	BSP
03205	40 - 3/4"	147	59	92	17	PN16	BSP
03206	40 - 1"	157	59	92	21	PN16	BSP

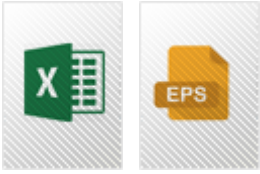


ITEM 130 | Double clamp saddle 2 screws

03207	50 - 1/2"	143	52	100	16	PN16	BSP
03208	50 - 3/4"	145	52	100	17	PN16	BSP
03209	50 - 1"	162	52	100	21	PN16	BSP



Product Documents



Product Certificates

Company Certificates

