



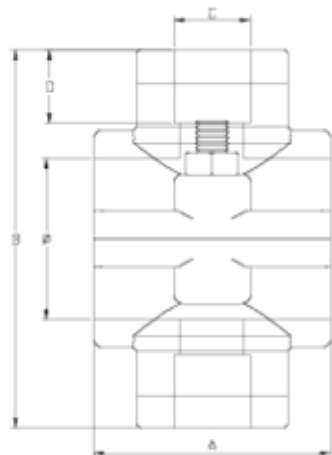
## Clamp saddles

# Reinforced double clamp saddle 2 screws

## ITEM 133



| REFERENCE | DESCRIPTION                             | Net weight | Volumen (m <sup>3</sup> ) | Gross weight | Unidades lote |
|-----------|---|------------|---------------------------|--------------|---------------|
| 1003126   | PP DOUBLE CLAMP SADDLE REINF. 32-1"     | 0,1817     | 0,03129                   | 11,03        | 60            |
| 1003153   | DOUBLE CLAMP SADDLE, REINFORCED 20-1/2" | 0,1165     | 0,03129                   | 9,893        | 80            |
| 1003154   | DOUBLE CLAMP SADDLE, REINFORCED 20-3/4" | 0,1095     | 0,02244                   | 9,3          | 80            |
| 1003300   | PP DOUBLE CLAMP SADDLE REINF. 25-1/2"   | 0,1082     | 0,02244                   | 9,1417       | 80            |
| 1003301   | PP DOUBLE CLAMP SADDLE REINF. 25-3/4"   | 0,104404   | 0,02244                   | 9,04         | 80            |
| 1003302   | PP DOUBLE CLAMP SADDLE REINF. 32-1/2"   | 0,136455   | 0,03129                   | 8,7603       | 60            |
| 1003303   | PP DOUBLE CLAMP SADDLE REINF. 32-3/4"   | 0,141      | 0,02244                   | 8,96         | 60            |
| 1003304   | PP DOUBLE CLAMP SADDLE REINF. 40-1/2"   | 0,17419    | 0,03129                   | 9,345        | 50            |
| 1003305   | PP DOUBLE CLAMP SADDLE REINF. 40-3/4"   | 0,169      | 0,03129                   | 9,472        | 50            |
| 1003306   | PP DOUBLE CLAMP SADDLE REINF. 40-1"     | 0,183      | 0,03129                   | 9,928        | 50            |
| 1003307   | PP DOUBLE CLAMP SADDLE REINF. 50-1/2"   | 0,156551   | 0,03129                   | 7,6178       | 45            |
| 1003308   | PP DOUBLE CLAMP SADDLE REINF. 50-3/4"   | 0,154329   | 0,03129                   | 7,5178       | 45            |
| 1003309   | PP DOUBLE CLAMP SADDLE REINF. 50-1"     | 0,175      | 0,03129                   | 8,68         | 45            |



## ITEM 133 | Reinforced double clamp saddle 2 screws

| Código | f tubo - C | Peso (g) | A  | B  | D  | PN   | TIPO ROSCA |
|--------|------------|----------|----|----|----|------|------------|
| 03153  | 20 - 1/2"  | 82       | 43 | 63 | 16 | PN16 | BSP        |
| 03154  | 20 - 3/4"  | 88       | 43 | 63 | 17 | PN16 | BSP        |
| 03300  | 25 - 1/2"  | 98       | 45 | 71 | 16 | PN16 | BSP        |
| 03301  | 25 - 3/4"  | 95       | 45 | 71 | 17 | PN16 | BSP        |
| 03302  | 32 - 1/2"  | 131      | 49 | 84 | 16 | PN16 | BSP        |
| 03303  | 32 - 3/4"  | 138      | 49 | 84 | 17 | PN16 | BSP        |
| 03126  | 32 - 1"    | 194      | 59 | 92 | 21 | PN16 | BSP        |
| 03304  | 40 - 1/2"  | 160      | 59 | 92 | 16 | PN16 | BSP        |
| 03305  | 40 - 3/4"  | 167      | 59 | 92 | 17 | PN16 | BSP        |
| 03306  | 40 - 1"    | 183      | 59 | 92 | 21 | PN16 | BSP        |



## ITEM 133 | Reinforced double clamp saddle 2 screws

|       |           |     |    |     |    |      |     |
|-------|-----------|-----|----|-----|----|------|-----|
| 03307 | 50 - 1/2" | 159 | 52 | 100 | 16 | PN16 | BSP |
| 03308 | 50 - 3/4" | 165 | 52 | 100 | 17 | PN16 | BSP |
| 03309 | 50 - 1"   | 188 | 52 | 100 | 21 | PN16 | BSP |



## Product Documents



## Product Certificates

## Company Certificates

