



Clamp saddles

Reinforced double clamp saddle 4 screws

ITEM 135



REFERENCE	DESCRIPTION	Net weight	Volumen (m ³)	Gross weight	Unidades lote
1003118	PP DOUBLE CLAMP SADDLE REINF. 110-1/2"	0,50814	0,06149	13,624	25
1003122	PP DOUBLE CLAMP SADDLE REINF. 125-1/2"	0,6266	0,06150	18,5248	28
1003146	PP DOUBLE CLAMP SADDLE REINF. 50-1 1/4"	0,3394	0,06149	16,738	45
1003310	PP DOUBLE CLAMP SADDLE REINF. 63-1/2"	0,278412	0,04117	17,76	60
1003311	PP DOUBLE CLAMP SADDLE REINF. 63-3/4"	0,262912	0,06347	16,604	60
1003312	PP DOUBLE CLAMP SADDLE REINF. 63-1"	0,292662	0,06347	18,392	60
1003313	PP DOUBLE CLAMP SADDLE REINF. 63-1 1/4"	0,325162	0,06347	20,565	60
1003314	PP DOUBLE CLAMP SADDLE REINF. 63-1 1/2"	0,354995	0,06149	22,22	60
1003315	PP DOUBLE CLAMP SADDLE REINF. 75-1/2"	0,3406	0,04460	12,93	35
1003316	PP DOUBLE CLAMP SADDLE REINF. 75-3/4"	0,361317	0,04460	13,38	35
1003317	PP DOUBLE CLAMP SADDLE REINF. 75-1"	0,3776	0,06347	14,045	35
1003318	PP DOUBLE CLAMP SADDLE REINF. 75-1 1/4"	0,414	0,06150	23,309	35
1003319	PP DOUBLE CLAMP SADDLE REINF. 75-1 1/2"	0,424	0,06150	16,24	35
1003320	PP DOUBLE CLAMP SADDLE REINF. 75-2"	0,511	0,06347	18,715	35
1003321	PP DOUBLE CLAMP SADDLE REINF. 90-1/2"	0,389003	0,04460	12,4	30
1003322	PP DOUBLE CLAMP SADDLE REINF. 90-3/4"	0,652503	0,04117	20,545	30
1003323	PP DOUBLE CLAMP SADDLE REINF. 90-1"	0,4082	0,04460	12,94	30
1003324	PP DOUBLE CLAMP SADDLE REINF. 90-1 1/4"	0,447	0,06150	21,108	30
1003325	PP DOUBLE CLAMP SADDLE REINF. 90-1 1/2"	0,463837	0,06150	14,885	30
1003326	PP DOUBLE CLAMP SADDLE REINF. 90-2"	0,54367	0,06150	17,0215	30
1003327	PP DOUBLE CLAMP SADDLE REINF. 110-3/4"	0,48458	0,06649	13,33	25
1003328	PP DOUBLE CLAMP SADDLE REINF. 110-1"	0,50118	0,06347	13,745	25
1003329	PP DOUBLE CLAMP SADDLE REINF. 110-1 1/4"	0,56518	0,06149	15,05	25



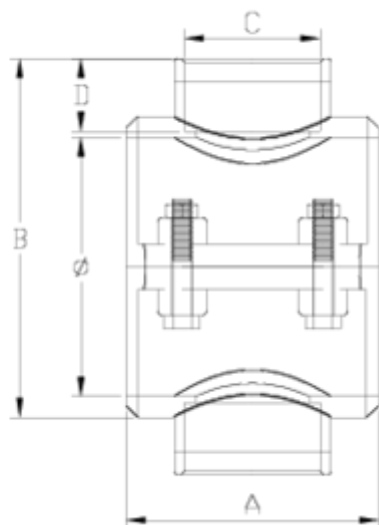
Clamp saddles

Reinforced double clamp saddle 4 screws

ITEM 135



REFERENCE	DESCRIPTION	Net weight	Volumen (m ³)	contenido.Peso bruto	Unidades lote
1003330	PP DOUBLE CLAMP SADDLE REINF. 110-1 1/2"	0,585	0,06347	18,53	25
1003331	PP DOUBLE CLAMP SADDLE REINF. 110-2"	1,1565	0,06347	11,94	20
1003332	PP DOUBLE CLAMP SADDLE REINF. 110-2 1/2"	0,834	0,06149	17,254	20
1003333	PP DOUBLE CLAMP SADDLE REINF. 125-3/4"	0,591	0,06150	12,784	28
1003334	PP DOUBLE CLAMP SADDLE REINF. 125-1"	0,638554	0,06150	18,8	28
1003335	PP DOUBLE CLAMP SADDLE REINF. 125-1 1/4"	0,675304	0,06150	19,829	28
1003336	PP DOUBLE CLAMP SADDLE REINF. 125-1 1/2"	0,689625	0,06150	20,23	28
1003337	PP DOUBLE CLAMP SADDLE REINF. 125-2"	0,70958	0,06150	18,685	25
1003338	PP DOUBLE CLAMP SADDLE REINF. 125-2 1/2"	0,881	0,08678	23,005	25



ITEM 135 | Reinforced double clamp saddle 4 screws

Código	f tubo - C	Peso (g)	A	B	D	PN	TIPO ROSCA
03146	50 - 1 1/4"	357.68	70	123	23	PN16	BSP
03310	63 - 1/2"	281.44	70	115	16	PN16	BSP
03311	63 - 3/4"	284.32	70	115	17	PN16	BSP
03312	63 - 1"	299.28	70	123	21	PN16	BSP
03313	63 - 1 1/4"	314	70	123	23	PN16	BSP
03314	63 - 1 1/2"	337.44	70	123	31	PN16	BSP
03315	75 - 1/2"	371.04	85	135	16	PN10	BSP
03316	75 - 3/4"	366.08	85	130	17	PN10	BSP
03317	75 - 1"	378.8	85	135	21	PN10	BSP
03318	75 - 1 1/4"	402.48	85	139	23	PN10	BSP



ITEM 135 | Reinforced double clamp saddle 4 screws

03319	75 - 1 1/2"	414.72	85	139	31	PN10	BSP
03320	75 - 2"	461.92	85	147	38	PN10	BSP
03321	90 - 1/2"	396.8	87	144	16	PN10	BSP
03322	90 - 3/4"	406.4	87	144	17	PN10	BSP
03323	90 - 1"	419.12	87	150	21	PN10	BSP
03324	90 - 1 1/4"	440.56	87	154	23	PN10	BSP
03325	90 - 1 1/2"	457.28	87	154	31	PN10	BSP
03326	90 - 2"	498.88	87	162	38	PN10	BSP
03118	110 - 1/2"	542.4	104	164	16	PN10	BSP
03327	110 - 3/4"	538.56	104	164	17	PN10	BSP
03328	110 - 1"	563.6	104	170	21	PN10	BSP
03329	110 - 1 1/4"	578.32	104	180	23	PN10	BSP
03330	110 - 1 1/2"	599.52	104	180	31	PN10	BSP
03331	110 - 2"	643.36	104	182	38	PN10	BSP
03332	110 - 2 1/2"	733.76	104	196	44	PN10	BSP
03122	125 - 1/2"	676.8	101	185	16	PN10	BSP
03333	125 - 3/4"	643.84	101	185	17	PN10	BSP
03334	125 - 1"	673.36	101	189	21	PN10	BSP
03335	125 - 1 1/4"	684.72	101	197	23	PN10	BSP
03336	125 - 1 1/2"	707.04	101	197	31	PN10	BSP
03337	125 - 2"	722.88	101	203	38	PN10	BSP
03338	125 - 2 1/2"	814.4	101	223	44	PN10	BSP



Product Documents



Product Certificates

Company Certificates

