

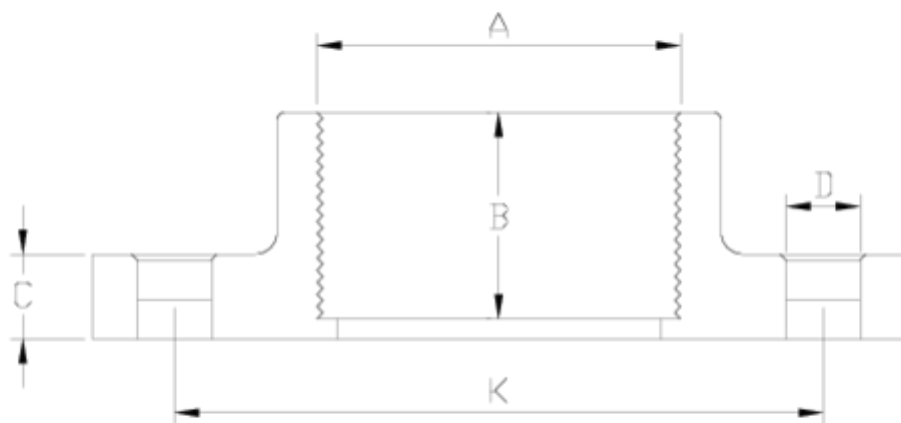


Flanges and adaptors

Reinforced compact flange, female threaded ITEM 071



| REFERENCE | DESCRIPTION | Net weight | Volumen (m ³) | Gross weight | Unidades lote |
|-----------|---------------------------------------|------------|---------------------------|--------------|---------------|
| 1010055 | COMPACT FLANGE,F.THREAD REINF. 1 1/2" | 0,366925 | 0,03129 | 15,25 | 40 |
| 1010056 | COMPACT FLANGE,F.THREAD REINF. 2" | 0,5029 | 0,03682 | 18,655 | 36 |
| 1010057 | COMPACT FLANGE,F.THREAD REINF. 2 1/2" | 0,588 | 0,04117 | 14,7524 | 24 |
| 1010058 | COMPACT FLANGE,F.THREAD REINF. 3" | 0,881603 | 0,06347 | 27,235 | 30 |
| 1010059 | COMPACT FLANGE,F.THREAD REINF. 4" | 1,061089 | 0,06347 | 19,74 | 18 |



ITEM 071 | Reinforced compact flange, female threaded

| Código | A | Peso (g) | B | K | C | D | PN | ROSCA |
|--------|--------|----------|----|---------|----|------|------|-------|
| 10055 | 1 1/2" | 384 | 29 | 110 | 18 | 4x18 | PN10 | BSP |
| 10056 | 2" | 445 | 30 | 125 | 18 | 4x18 | PN10 | BSP |
| 10057 | 2 1/2" | 612 | 30 | 145 | 19 | 4x18 | PN10 | BSP |
| 10058 | 3" | 789 | 35 | 146-160 | 21 | 8x18 | PN10 | BSP |
| 10059 | 4" | 1045 | 39 | 178-190 | 23 | 8x18 | PN10 | BSP |



Product Documents



Product Certificates



Company Certificates

