

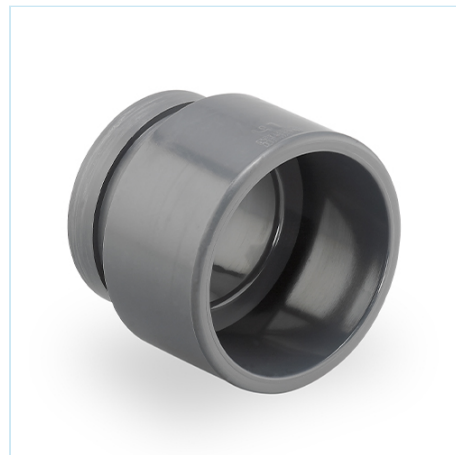


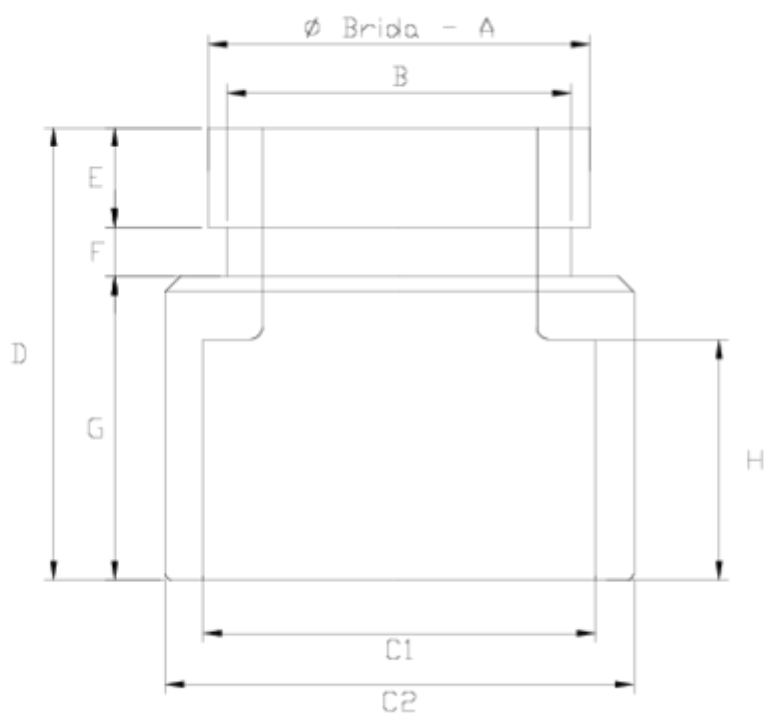
Netvitc® coupling

Solvent socket outlet

ITEM 086

| REFERENCE | DESCRIPTION | Net weight | Volumen (m ³) | Gross weight | Unidades lote |
|-----------|-----------------------------------|------------|---------------------------|--------------|---------------|
| 110N016 | NETVITC COUPLING SOLV. SOCKET 50 | 0,04113 | 0,00892 | 1,01 | 20 |
| 110N017 | NETVITC COUPLING SOLV. SOCKET 63 | 0,15163 | 0,00892 | 3,22 | 20 |
| 110N018 | NETVITC COUPLING SOLV. SOCKET 75 | 0,20435 | 0,03129 | 4,66 | 20 |
| 110N019 | NETVITC COUPLING SOLV. SOCKET 90 | 0,400315 | 0,02244 | 8,494 | 20 |
| 110N020 | NETVITC COUPLING SOLV. SOCKET 110 | 0,5317 | 0,03129 | 5,89 | 10 |
| 110N023 | NETVITC COUPLING SOLV. SOCKET 160 | 1,26925 | 0,02243 | 5,5647 | 4 |





ITEM 086 | Solvent socket outlet

| CÓDIGO | f BRIDA - A | C1 | C2 | PESO (g) | B | D | E | F | G | H | PN | MEDIDA |
|--------|-------------------|-----|-----|-------------|-----|-----|----|----|-----|----|------|---------|
| 10n16 | 1 1/2" | 50 | 63 | 91 | 45 | 66 | 16 | 8 | 40 | 31 | PN10 | MÉTRICO |
| 10n17 | 2" | 63 | 75 | 143 | 56 | 72 | 16 | 8 | 48 | 38 | PN10 | MÉTRICO |
| 10n18 | 2 1/2" | 75 | 90 | 225 | 72 | 76 | 16 | 8 | 52 | 45 | PN10 | MÉTRICO |
| 10n19 | 3" | 90 | 110 | 314 | 81 | 88 | 16 | 11 | 62 | 51 | PN10 | MÉTRICO |
| 10n20 | 4" | 110 | 125 | 610 | 110 | 105 | 16 | 11 | 77 | 64 | PN10 | MÉTRICO |
| 10n23 | 6" | 160 | 186 | 1265 | 160 | 130 | 16 | 11 | 103 | 86 | PN6 | MÉTRICO |



Product Documents



Product Certificates

Company Certificates

