



## Netvitc System pressure fittings

# Netvitc System® "Air" female threaded outlet double tee

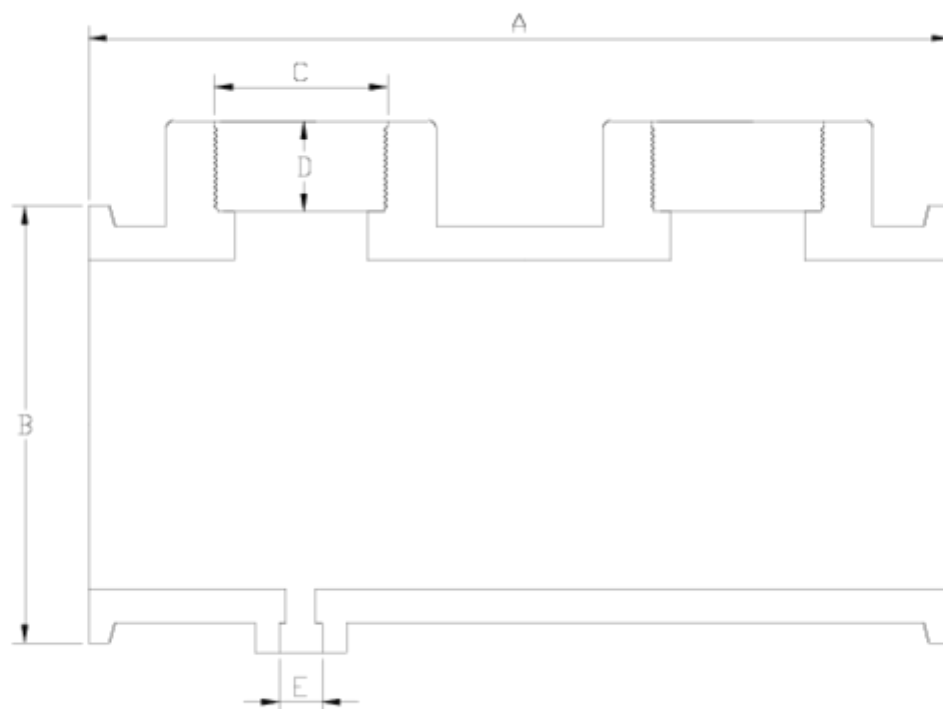
## GRPP

### ITEM 57N



REFERENCE	DESCRIPTION	Net weight	Volumen (m <sup>3</sup> )	Gross weight	Unidades lote
101N740	PPFV AIR SNS F/THREADED DOUBLE TEE 90-2"-1/4"	1,02665	0,01553	2,38	2
101N741	GPFV AIR SNS F/THREADED DOUBLE TEE 90-2"-1/2"	1,07	0,01553	2,47	2
101N742	GPFV AIR SNS F/THREADED DOUBLE TEE 90-2"-3/4"	1,1214	0,01553	2,5728	2
101N743	GPFV AIR SNS F/THREADED DOUBLE TEE 110-2"-1/4"	1,4485	0,03129	3,47	2
101N744	GPFV AIR SNS F/THREADED DOUBLE TEE 110-2"-1/2"	1,5002	0,03129	3,4973	2
101N745	GPFV AIR SNS F/THREADED DOUBLE TEE 110-2"-3/4"	1,4235	0,03129	3,42	2
101N747	TE DOBLE NS "AIR" 160-2"-3/4" PPFV	2,5473	0,04117	5,735	2
101N748	TE DOBLE NS "AIR" 160-2"-1" PPFV	2,5473	0,04117	5,735	2





## ITEM 57N | Netvitc System® "Air" female threaded outlet double tee GRPP

CÓDIGO	f	PESO	BRIDA	A	B	C	D	E	PN	ROSCA
1N740	90-2"	1027	90	283	121	2"	38	1/4"	PN10	BSP
1N741	90-2"	1070	90	283	121	2"	38	1/2"	PN10	BSP
1N742	90-2"	1121	90	283	121	2"	38	3/4"	PN10	BSP
1N743	110-2"	1449	110	280	144	2"	38	1/4"	PN10	BSP
1N744	110-2"	1500	110	280	144	2"	38	1/2"	PN10	BSP
1N745	110-2"	1424	110	280	144	2"	38	3/4"	PN10	BSP



## Product Documents



## Product Certificates

## Company Certificates

