



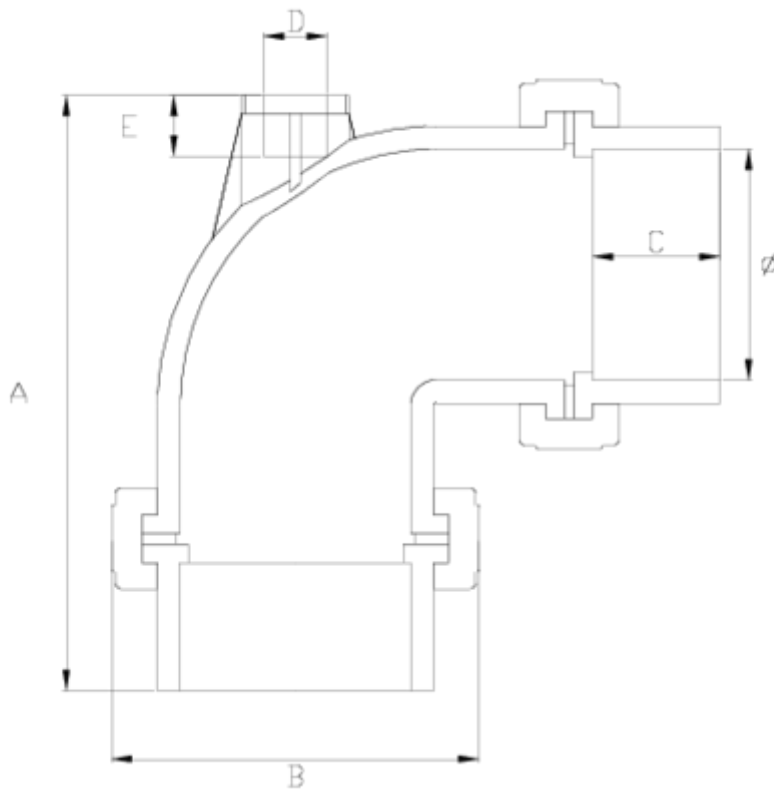
## Netvitc System pressure fittings

# "AIR" PVC Netvitc 90° elbow W/F, F/T outlet ITEM 23N



REFERENCE	DESCRIPTION	Net weight	Volumen (m <sup>3</sup> )	Gross weight	Unidades lote
101N105	"AIR" NET. SYS. 90° ELBOW W/F 63-1/2"	0,618	0,01553	3,79	4
101N107	"AIR" NET. SYS. 90° ELBOW W/F 90-3/4"	2,1595	0,04717	9,28	4
101N109	"AIR" NET. SYS. 90° ELBOW W/F 110-1"	3,092425	0,04880	12,945	4
101N111	"AIR" NET. SYS. 90° ELBOW W/F 125-2"	4,146	0,04879	8,87	2
101N113	"AIR" NETVITC SYSTEM 90° ELBOW W/F 160	7,11	0,04836	7,95	1
101N114	"AIR" NETVITC SYSTEM 90° ELBOW W/F 200	11,3983	0,06879	12,42	1





## ITEM 23N | "AIR" PVC Netvitc 90° elbow W/F, F/T outlet

CÓDIGO	Ø	PESO	BRIDA	A	B	C	D	E	PN	MEDIDA
1N105	63	618	63	169	125	36	1/2"	17	PN10	MÉTRICO
1N107	90	2031	90	234	164	52	3/4"	21	PN10	MÉTRICO
1N109	110	3092	110	277	188	61	1"	31	PN10	MÉTRICO
1N111	125	4146	125	330	203	69	2"	36	PN10	MÉTRICO
1N113	160	7110	160	400	251	86	2"	36	PN10	MÉTRICO
1N114	200	11175	200	473	297	107	2"	36	PN10	MÉTRICO



## Product Documents



## Product Certificates

## Company Certificates

