

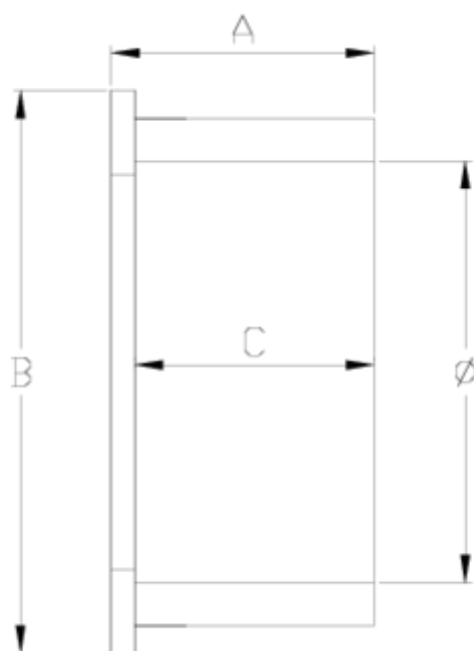


## Netvitc System pressure fittings

# Netvitc System adaptor, solvent socket ITEM 19N



REFERENCE	DESCRIPTION	Net weight	Volumen (m <sup>3</sup> )	Gross weight	Unidades lote
101N977	PVC NETVITC SYSTEM ADAPTOR 63	0,102	0,00891	1,83	16
101N980	PVC NETVITC SYSTEM ADAPTOR 75	0.1422	0.015532	2.602	16
101N981	PVC NETVITC SYSTEM ADAPTOR 90	0,24095	0,00892	2,115	8
101N983	PVC NETVITC SYSTEM ADAPTOR 110	0,4725	0,01553	4,11	8
101N986	PVC NETVITC SYSTEM ADAPTOR 125	0,559038	0,02244	4,96	8
101N988	PVC NETVITC SYSTEM ADAPTOR 140	0.7714	0.031294	6.744	8
101N990	PVC NETVITC SYSTEM ADAPTOR 160	1,04925	0,02243	4,6847	4
101N992	PVC NETVITC SYSTEM ADAPTOR 200	1,77455	0,04717	7,74	4



## ITEM 19N | Netvitc System adaptor, solvent socket

CÓDIGO	f	PESO	BRIDA	A	B	C	PN	MEDIDA
1N977	63	102	63	40	92	43	PN10	MÉTRICO
1N980	75	151	75	47	100	44	PN10	MÉTRICO
1N981	90	241	90	54	121	50	PN10	MÉTRICO
1N983	110	473	110	67	144	61	PN10	MÉTRICO
1N986	125	559	125	79	159	70	PN10	MÉTRICO
1N988	140	885	140	87	176	76	PN10	MÉTRICO
1N990	160	1049	160	94	201	87	PN10	MÉTRICO
1N992	200	1775	200	118	251	106	PN10	MÉTRICO



## Product Documents



## Product Certificates

## Company Certificates

