

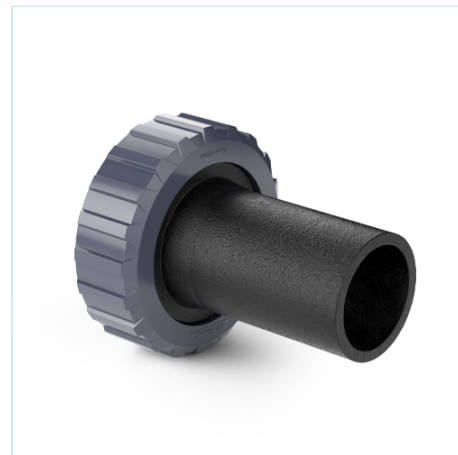


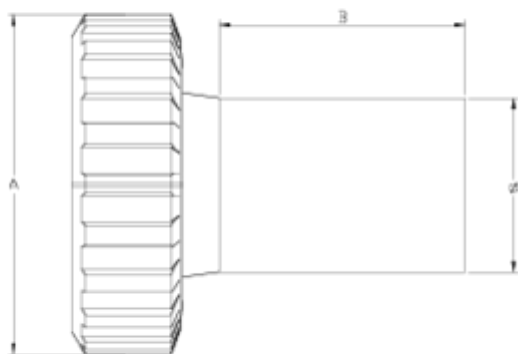
Spare parts

PE outlet

ITEM 642

| REFERENCE | DESCRIPTION | Net weight | Volumen (m ³) | Gross weight | Unidades lote |
|-----------|------------------------------------|------------|---------------------------|--------------|---------------|
| 111D841 | BIDIRECTIONAL BALL V. PE OUTLET 20 | 0,04125 | 0,01553 | 1,5642 | 30 |
| 111D842 | BIDIRECTIONAL BALL V. PE OUTLET 25 | 0,057143 | 0,01553 | 2,041 | 30 |
| 111D843 | BIDIRECTIONAL BALL V. PE OUTLET 32 | 0,0767 | 0,02244 | 2,541 | 30 |
| 111D844 | BIDIRECTIONAL BALL V. PE OUTLET 40 | 0,14541 | 0,02244 | 4,58 | 30 |
| 111D845 | BIDIRECTIONAL BALL V. PE OUTLET 50 | 0,219233 | 0,03129 | 7,15 | 30 |
| 111D846 | BIDIRECTIONAL BALL V. PE OUTLET 63 | 0,3653 | 0,03129 | 7,879 | 20 |
| 111D847 | BIDIRECTIONAL BALL V. PE OUTLET 75 | 0,605075 | 0,01553 | 2,747 | 4 |
| 111D848 | THERMO FUSION OUTLET 90 | 0,9 | 0,02243 | 4,0877 | 4 |





ITEM 642 | PE outlet

| CÓDIGO | r | PESO (g) | DN | A | B | PN | MEDIDA |
|--------|----|----------|----|-----|-----|------|---------|
| 11D841 | 20 | 67 | 15 | 55 | 65 | PN16 | MÉTRICO |
| 11D842 | 25 | 81 | 20 | 62 | 65 | PN16 | MÉTRICO |
| 11D843 | 32 | 134 | 25 | 72 | 70 | PN16 | MÉTRICO |
| 11D844 | 40 | 150 | 32 | 88 | 70 | PN16 | MÉTRICO |
| 11D845 | 50 | 230 | 40 | 103 | 79 | PN16 | MÉTRICO |
| 11D846 | 63 | 340 | 50 | 120 | 89 | PN16 | MÉTRICO |
| 11D847 | 75 | 580 | 65 | 150 | 91 | PN10 | MÉTRICO |
| 11D848 | 90 | 990 | 80 | 181 | 100 | PN10 | MÉTRICO |



Product Documents



Product Certificates

Company Certificates

