



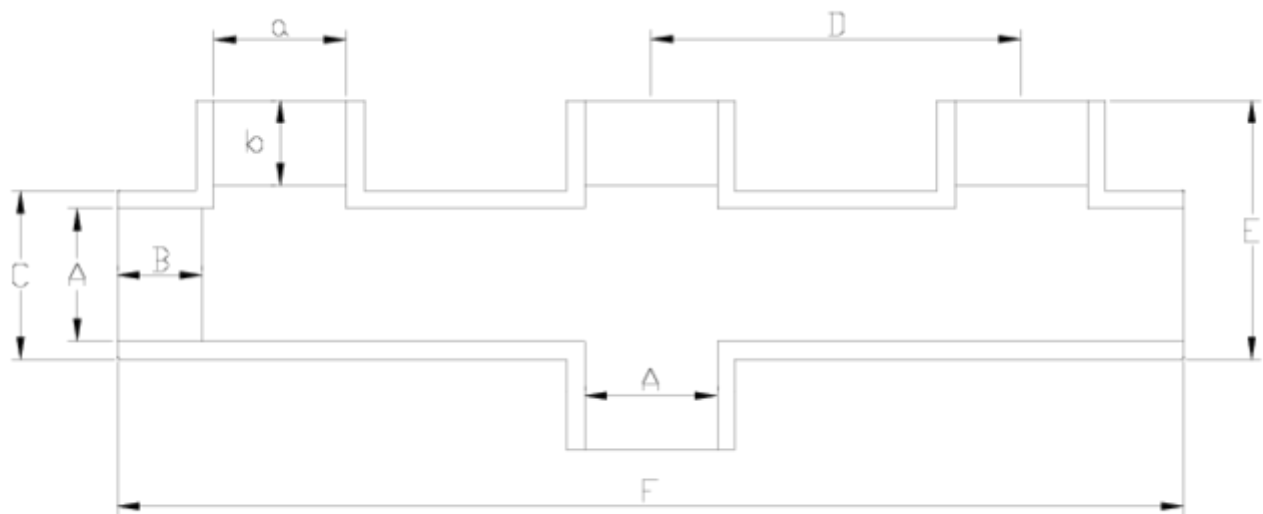
## PP threaded fittings

# 3-inlet manifold F/T

## ITEM 554

REFERENCE	DESCRIPTION	Net weight	Volumen (m <sup>3</sup> )	Gross weight	Unidades lote
1004336	PP MANIFOLD FEMALE THR. 2"-2"	1,299875	0,04460	6,005	4
1004343	PP MANIFOLD FEMALE THR. 1"-1"	0,32821	0,02243	4,13	10
1004345	PP MANIFOLD FEMALE THR. 2"-1 1/2"	1,284875	0,04460	5,945	4





## ITEM 554 | 3-inlet manifold F/T

Código	A-a	Peso (g)	b	B	C	D	E	F	PN	TIPO ROSCA
04342	1" -1"	255	22	22	40	115	78	308	PN10	BSP
04345	2"-1 1/2"	753	21	38	75	165	115	475	PN10	BSP
04336	2"-2"	820	26	38	75	165	115	475	PN10	BSP



## Product Documents



## Product Certificates



## Company Certificates

