



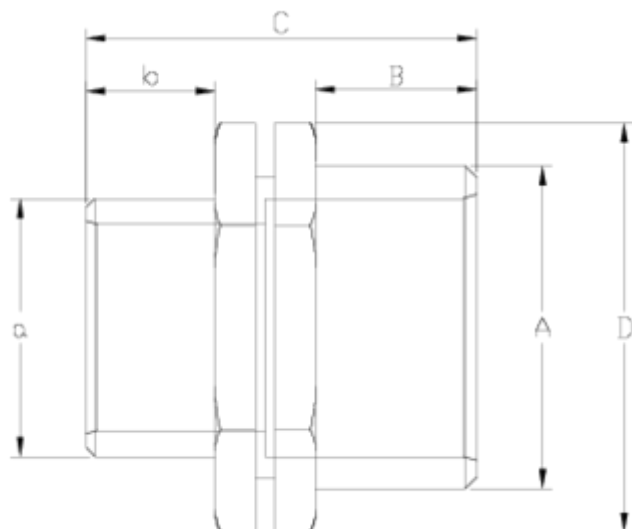
## PP threaded fittings

# Reducing nipple

## ITEM 116

REFERENCE	DESCRIPTION	Net weight	Volumen (m <sup>3</sup> )	Gross weight	Unidades lote
1004020	REDUCING PP NIPPLE 3/4"-1/2"	0,00825	0,00892	1,865	200
1004021	REDUCING PP NIPPLE 1"-1/2"	0,015067	0,01553	3,34	200
1004022	REDUCING PP NIPPLE 1"-3/4"	0,0163	0,01553	3,615	200
1004024	REDUCING PP NIPPLE 1 1/4"-3/4"	0,024944	0,01553	2,84	100
1004025	REDUCING PP NIPPLE 1 1/4"-1"	0,025833	0,01553	2,91	100
1004026	REDUCING PP NIPPLE 1 1/2"-3/4"	0,033552	0,00892	1,865	50
1004027	REDUCING PP NIPPLE 1 1/2"-1"	0,036152	0,00892	1,995	50
1004028	REDUCING PP NIPPLE 1 1/2"-1 1/4"	0,037552	0,00892	2,065	50
1004030	REDUCING PP NIPPLE 2"-1 1/4"	0,055455	0,02244	3,815	60
1004031	REDUCING PP NIPPLE 2"-1 1/2"	0,058705	0,02244	4,01	60
1004032	REDUCING PP NIPPLE 2 1/2"-1 1/4"	0,07863	0,00892	1,76	20
1004033	REDUCING PP NIPPLE 2 1/2"-1 1/2"	0,08313	0,00892	1,85	20
1004034	REDUCING PP NIPPLE 2 1/2"-2"	0,08788	0,00892	1,945	20





## ITEM 116 | Reducing nipple

Código	f tubo - A-a	Peso (g)	B	b	C	D	PN	TIPO ROSCA
04020	3/4" - 1/2"	8	15	13	37	26	PN10	BSP
04021	1 - 1/2"	15	17	13	43	37	PN10	BSP
04022	1" - 3/4"	17	18	15	45	37	PN10	BSP
04024	1 1/4" - 3/4"	24	20	15	47	45	PN10	BSP
04025	1 1/4" - 1"	28	20	18	50	45	PN10	BSP
04026	1 1/2" - 3/4"	34	23	15	51	52	PN10	BSP
04027	1 1/2" - 1"	36	23	18	53	52	PN10	BSP
04028	1 1/2" - 1 1/4"	38	23	20	56	52	PN10	BSP
04030	2" - 1 1/4"	55	26	20	59	63	PN10	BSP
04031	2" - 1 1/2"	58	26	23	62	63	PN10	BSP



## ITEM 116 | Reducing nipple

04032	2 1/2"-1 1/4"	82	29	20	63	78	<b>PN10</b>	BSP
04033	2 1/2"-1 1/2"	83	29	23	67	78	<b>PN10</b>	BSP
04034	2 1/2"-2"	88	29	26	70	78	<b>PN10</b>	BSP



## Product Documents



## Product Certificates



## Company Certificates

