

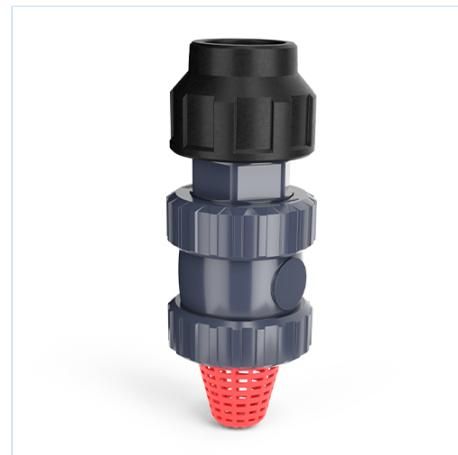


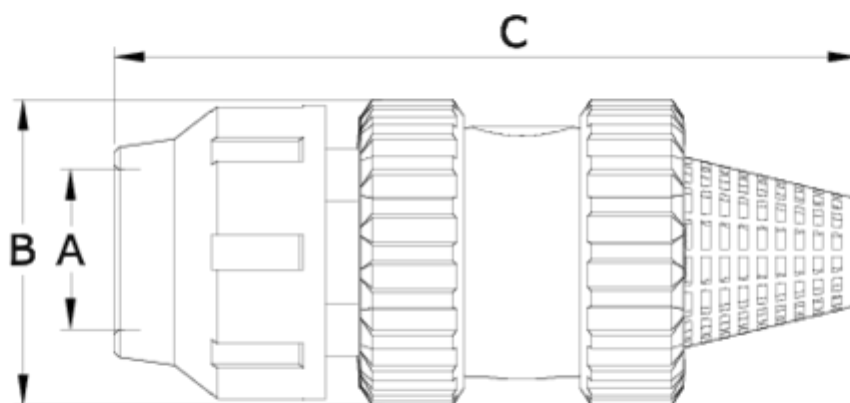
## PVC check valves (with spring)

# Fitting outlet - Foot - FPM seal

## ITEM 277

REFERENCE	DESCRIPTION	Net weight	Volumen (m <sup>3</sup> )	Gross weight	Unidades lote
1016721	PVC FOOT CHECK V. (W/SPR), FITTING O.20 FPM	0.165	0.022435	7.14	40
1016722	PVC FOOT CHECK V. (W/SPR), FITTING O.25 FPM	0.23	0.031294	9.76	40
1016723	PVC FOOT CHECK V. (W/SPR), FITTING O.32 FPM	0.352	0.031294	11.12	30
1016724	PVC FOOT CHECK V. (W/SPR), FITTING O.40 FPM	0.581	0.031294	9.856	16
1016725	PVC FOOT CHECK V. (W/SPR), FITTING O.50 FPM	0.79	0.036816	12.47	15
1016726	PVC FOOT CHECK V. (W/SPR), FITTING O.63 FPM	1.285	0.04836	13.69	10
1016727	PVC FOOT CHECK V. (W/SPR), FITTING O.75 FPM	2.45	0.047171	13.01	5
1016728	PVC FOOT CHECK V. (W/SPR), FITTING O.90 FPM	4.592	0.06347	18.93	4





## ITEM 277 | Fitting outlet - Foot - FPM seal

Código Vitón	A	Peso	B	C	PN	MEDIDA
16721	20	158	52	146	PN16	MÉTRICO
16722	25	226	59	167	PN16	MÉTRICO
16723	32	364	69	205	PN16	MÉTRICO
16724	40	603	85	234	PN16	MÉTRICO
16725	50	780	99	242	PN16	MÉTRICO
16726	63	1133	116	306	PN16	MÉTRICO
16727	75	3689	150	414	PN10	MÉTRICO
16728	90	5900	178	465	PN10	MÉTRICO



## Product Documents



## Product Certificates

## Company Certificates

