



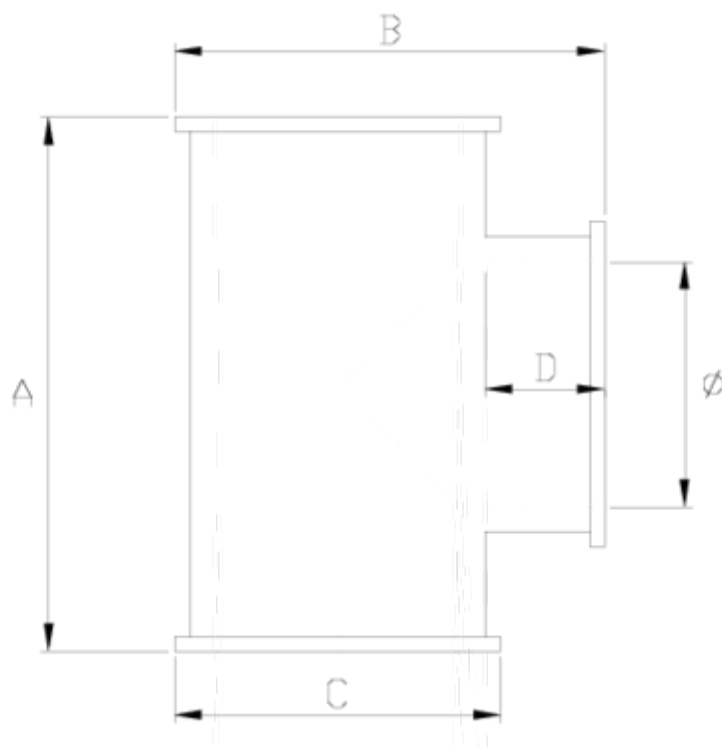
## Netvitc System pressure fittings

# PVC Netvitc System 90° tee

## ITEM 05N

REFERENCE	DESCRIPTION	Net weight	Volumen (m <sup>3</sup> )	Gross weight	Unidades lote
101N045	NET SYST 90° TEE 63	0,421	0,02457	4,515	10
101N047	NET SYST 90° TEE 90	1,116375	0,03648	9,525	8
101N048	NET SYST 90° TEE 110	1,43	0,06150	12,36	8
101N049	NET SYST 90° TEE 125	2,12325	0,06150	13,66	6
101N050	PVC SNS TEE 90° 140	2,877	0,03129	6,327	2
101N051	NETVITC SYSTEM 90° TEE 160	3,7922	0,04879	8,1597	2
101N052	NETVITC SYSTEM 90° TEE 200	7,184	0,08677	15,39	2





## ITEM 05N | PVC Netvitc System 90° tee

CÓDIGO	Ø	PESO	BRIDA	A	B	C	D	PN	MEDIDA
1N045	63	421	63	140	123	92	43	PN10	MÉTRICO
1N047	90	1116	90	203	162	121	50	PN10	MÉTRICO
1N048	110	1430	110	239	193	144	61	PN10	MÉTRICO
1N049	125	2123	125	276	217	159	70	PN10	MÉTRICO
1N050	140	2900	140	294	234	176	76	PN10	MÉTRICO
1N051	160	3792	160	333	267	201	87	PN10	MÉTRICO
1N052	200	7184	200	415	330	251	106	PN10	MÉTRICO



## Product Documents



## Product Certificates

## Company Certificates

