



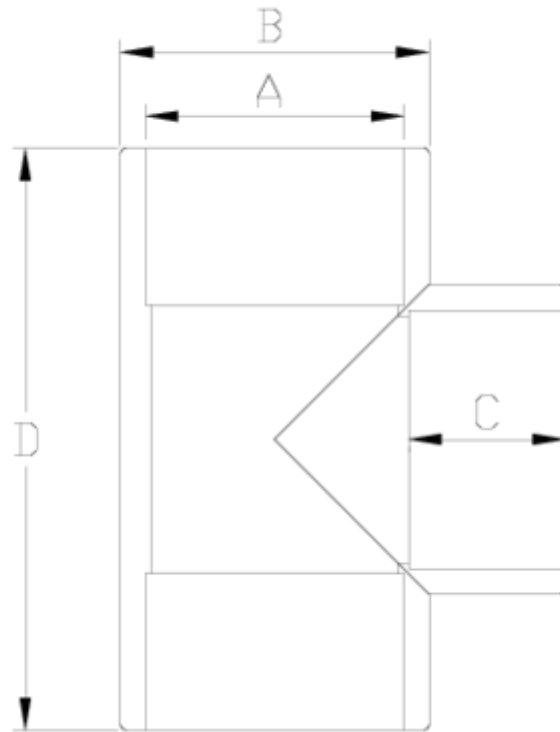
PVC-U pressure fittings

Plain 90° tee - white range

ITEM 039

| REFERENCE | DESCRIPTION | Net weight | Volumen (m ³) | Gross weight | Unidades lote |
|-----------|------------------------|------------|---------------------------|--------------|---------------|
| 1001380 | PVC 90° TEE 16 - WHITE | 0,014911 | 0,00892 | 2,424 | 150 |
| 1001381 | PVC 90° TEE 20 - WHITE | 0,027076 | 0,00892 | 2,895 | 100 |
| 1001385 | PVC 90° TEE 50 - WHITE | 0,18028 | 0,04717 | 12,36 | 65 |
| 1001386 | PVC 90° TEE 63 - WHITE | 0,342847 | 0,04717 | 13,67 | 38 |





ITEM 039 | Plain 90° tee - white range

| Código | A | Peso (g) | B | C | D | PN | MEDIDA |
|--------|----|----------|----|----|-----|------|---------|
| 01380 | 16 | 15 | 22 | 15 | 48 | PN16 | MÉTRICO |
| 01381 | 20 | 21 | 27 | 16 | 56 | PN16 | MÉTRICO |
| 01385 | 50 | 183 | 61 | 31 | 114 | PN16 | MÉTRICO |
| 01386 | 63 | 292 | 76 | 38 | 141 | PN16 | MÉTRICO |



Product Documents



Product Certificates



Company Certificates

