



PVC-U pressure fittings

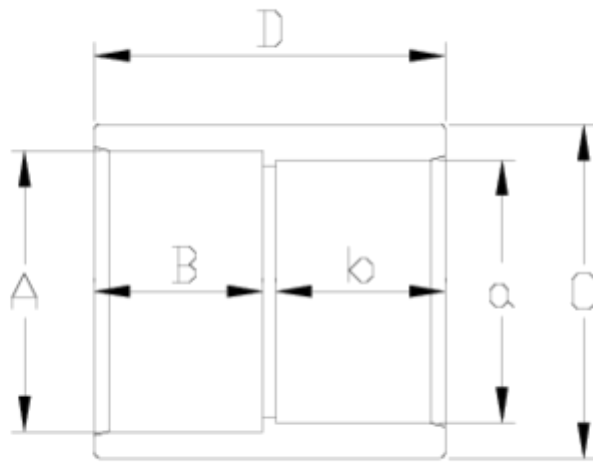
Standard transition coupling

BS-DIN

ITEM 895

| REFERENCE | DESCRIPTION | Net weight | Volumen (m ³) | Gross weight | Unidades lote |
|-----------|-----------------------------|------------|---------------------------|--------------|---------------|
| 1001900 | TRANS. SOCKET DIN-BS 90-3" | 0,456881 | 0,02280 | 7,665 | 16 |
| 1001901 | TRANS. SOCKET DIN-BS 110-4" | 0,698083 | 0,03129 | 8,95 | 12 |
| 1001903 | TRANS. SOCKET DIN-BS 160-6" | 1,410783 | 0,04879 | 9,04 | 6 |





ITEM 895 | Standard transition coupling BS-DIN

| Código | A-a | Peso (g) | B | C | c | D | PN | MEDIDA |
|--------|--------|----------|-----|----|----|-----|------|------------|
| 01900 | 90-3" | 495 | 108 | 51 | 51 | 108 | PN10 | BS-MÉTRICO |
| 01901 | 110-4" | 720 | 131 | 61 | 63 | 129 | PN10 | BS-MÉTRICO |
| 01903 | 160-6" | 1320 | 183 | 86 | 90 | 182 | PN10 | BS-MÉTRICO |



Product Documents



Product Certificates



Company Certificates

