



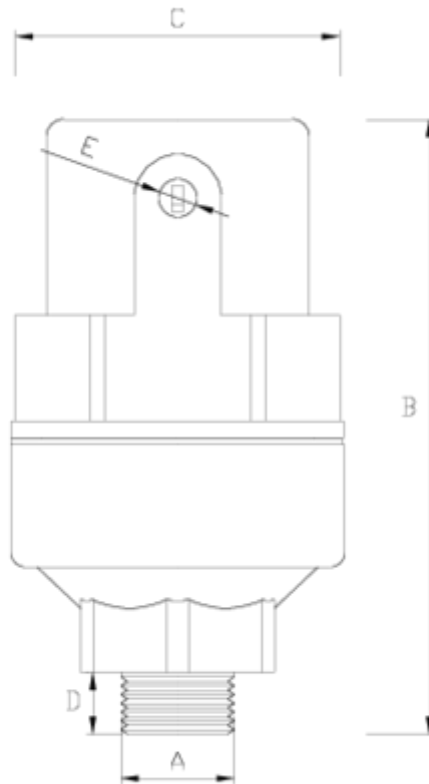
## Net air release valve

# Triple effect (D1) - PA

## ITEM 310

REFERENCE	DESCRIPTION	Net weight	Volumen (m <sup>3</sup> )	Gross weight	Unidades lote
1017541	NET® AIR VALVE 1/2" PA TRIPLE EFFECT	0,2933	0,02244	6,406	20
1017542	NET® AIR VALVE 3/4" PA TRIPLE EFFECT	0,361	0,02244	7,58	20
1017543	NET® AIR VALVE 1" PA TRIPLE EFFECT	0,364	0,02244	7,77	20





## ITEM 310 | Triple effect (D1) - PA

Código	f A	Peso (g)	B	C	D	E	Material	PN	TIPO ROSCA
17041	1/2"	288	137	75	14	1/8"	PPFV	PN16	BSP
17042	3/4"	292	139	75	16	1/8"	PPFV	PN16	BSP
17043	1"	299	142	75	19	1/8"	PPFV	PN16	BSP
17541	1/2"	300	137	75	14	1/8"	PA	PN25	BSP
17542	3/4"	304	139	75	16	1/8"	PA	PN25	BSP
17543	1"	312	142	75	19	1/8"	PA	PN25	BSP



## Product Documents



## Product Certificates

## Company Certificates

