

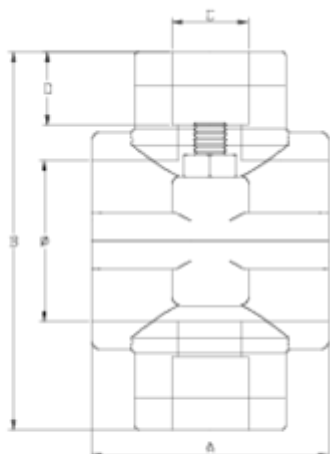


Collarines toma

Collarín toma doble reforzado 2 tornillos ITEM 133



| REFERENCIA | DESCRIPCIÓN | Peso neto | Volumen (m ³) | Peso bruto | Unidades lote |
|------------|----------------------------------|-----------|---------------------------|------------|---------------|
| 1003126 | COLLARIN TOMA DOBLE REF. 32-1" | 0,1817 | 0,03129 | 11,03 | 60 |
| 1003153 | COLLARIN TOMA DOBLE REF. 20-1/2" | 0,1165 | 0,03129 | 9,893 | 80 |
| 1003154 | COLLARIN TOMA DOBLE REF. 20-3/4" | 0,1095 | 0,02244 | 9,3 | 80 |
| 1003300 | COLLARIN TOMA DOBLE REF. 25-1/2" | 0,1082 | 0,02244 | 9,1417 | 80 |
| 1003301 | COLLARIN TOMA DOBLE REF. 25-3/4" | 0,104404 | 0,02244 | 9,04 | 80 |
| 1003302 | COLLARIN TOMA DOBLE REF. 32-1/2" | 0,136455 | 0,03129 | 8,7603 | 60 |
| 1003303 | COLLARIN TOMA DOBLE REF. 32-3/4" | 0,141 | 0,02244 | 8,96 | 60 |
| 1003304 | COLLARIN TOMA DOBLE REF. 40-1/2" | 0,17419 | 0,03129 | 9,345 | 50 |
| 1003305 | COLLARIN TOMA DOBLE REF. 40-3/4" | 0,169 | 0,03129 | 9,472 | 50 |
| 1003306 | COLLARIN TOMA DOBLE REF. 40-1" | 0,183 | 0,03129 | 9,928 | 50 |
| 1003307 | COLLARIN TOMA DOBLE REF. 50-1/2" | 0,156551 | 0,03129 | 7,6178 | 45 |
| 1003308 | COLLARIN TOMA DOBLE REF. 50-3/4" | 0,154329 | 0,03129 | 7,5178 | 45 |
| 1003309 | COLLARIN TOMA DOBLE REF. 50-1" | 0,175 | 0,03129 | 8,68 | 45 |



ITEM 133 | Collarín toma doble reforzado 2 tornillos

| Código | f tubo - C | Peso (g) | A | B | D | PN | TIPO ROSCA |
|--------|------------|----------|----|----|----|------|------------|
| 03153 | 20 - 1/2" | 82 | 43 | 63 | 16 | PN16 | BSP |
| 03154 | 20 - 3/4" | 88 | 43 | 63 | 17 | PN16 | BSP |
| 03300 | 25 - 1/2" | 98 | 45 | 71 | 16 | PN16 | BSP |
| 03301 | 25 - 3/4" | 95 | 45 | 71 | 17 | PN16 | BSP |
| 03302 | 32 - 1/2" | 131 | 49 | 84 | 16 | PN16 | BSP |
| 03303 | 32 - 3/4" | 138 | 49 | 84 | 17 | PN16 | BSP |
| 03126 | 32 - 1" | 194 | 59 | 92 | 21 | PN16 | BSP |
| 03304 | 40 - 1/2" | 160 | 59 | 92 | 16 | PN16 | BSP |
| 03305 | 40 - 3/4" | 167 | 59 | 92 | 17 | PN16 | BSP |
| 03306 | 40 - 1" | 183 | 59 | 92 | 21 | PN16 | BSP |



ITEM 133 | Collarín toma doble reforzado 2 tornillos

| | | | | | | | |
|-------|-----------|-----|----|-----|----|------|-----|
| 03307 | 50 - 1/2" | 159 | 52 | 100 | 16 | PN16 | BSP |
| 03308 | 50 - 3/4" | 165 | 52 | 100 | 17 | PN16 | BSP |
| 03309 | 50 - 1" | 188 | 52 | 100 | 21 | PN16 | BSP |



Documentación de Producto



Certificados de Producto

Certificados de Empresa

