

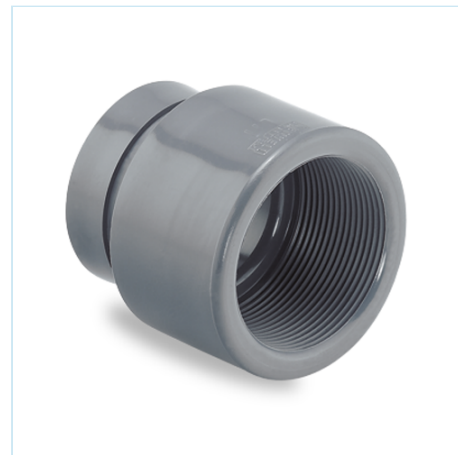


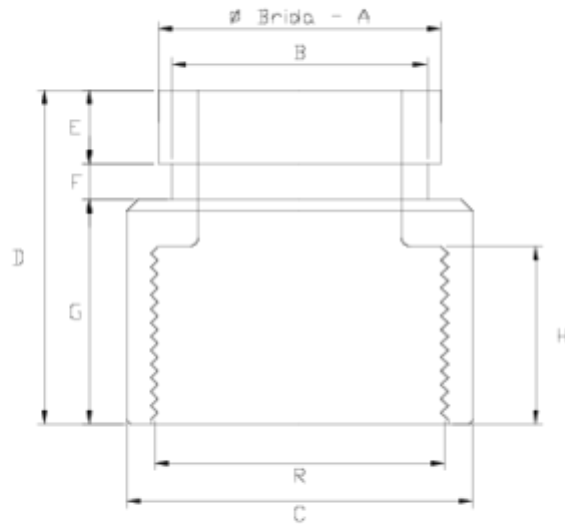
## Enlaces Netvitc®

# Salida rosca hembra NPT

## ITEM 923

| REFERENCIA | DESCRIPCIÓN                    | Peso neto | Volumen (m <sup>3</sup> ) | Peso bruto | Unidades lote |
|------------|--------------------------------|-----------|---------------------------|------------|---------------|
| 110N207    | ENLACE NETVITC R/HEMBRA 2" NPT | 0         | 0,00891                   | 0          | 20            |
| 110N209    | ENLACE NETVITC R/HEMBRA 3" NPT | 0,465     | 0,02457                   | 9,69       | 20            |
| 110N210    | ENLACE NETVITC R/HEMBRA 4" NPT | 0,663     | 0,03129                   | 7,203      | 10            |





## ITEM 923 | Salida rosca hembra NPT

| CÓDIGO | f<br>BRIDA-<br>A | R  | PESO<br>(g) | B   | C   | D   | E  | F  | G  | H  | PN   | MEDIDA |
|--------|------------------|----|-------------|-----|-----|-----|----|----|----|----|------|--------|
| 10n207 | 2"               | 2" | 169         | 56  | 75  | 72  | 16 | 8  | 48 | 34 | PN10 | NPT    |
| 10n209 | 3"               | 3" | 335         | 83  | 110 | 88  | 16 | 11 | 62 | 46 | PN10 | NPT    |
| 10n210 | 4"               | 4" | 630         | 110 | 131 | 105 | 16 | 11 | 77 | 43 | PN10 | NPT    |



## Documentación de Producto



## Certificados de Producto

## Certificados de Empresa

