



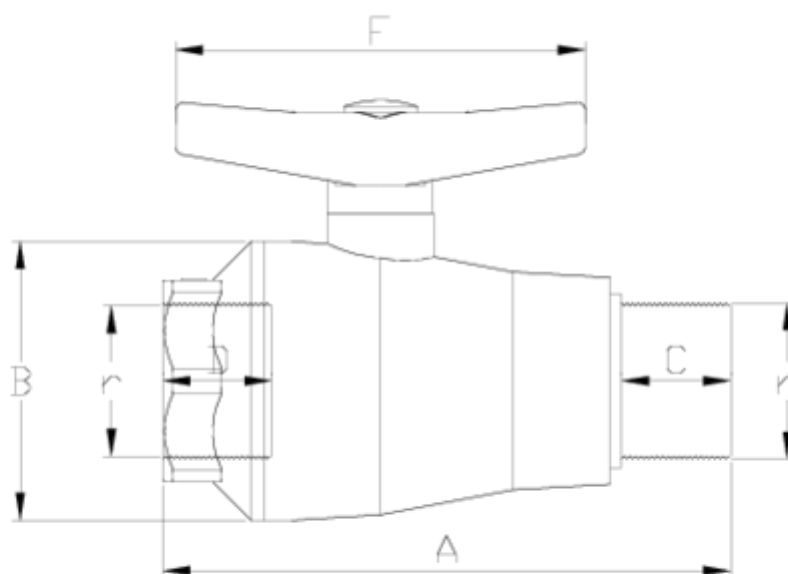
Válvulas de bola 'Compact'

Salida R/H macho FPM

ITEM 721

| REFERENCIA | DESCRIPCIÓN | Peso neto | Volumen (m ³) | Peso bruto | Unidades lote |
|------------|--------------------------------------|-----------|---------------------------|------------|---------------|
| 111C130 | VALVULA COMPACT ROSCA H-M 1/2" FPM | 0,106 | 0,00892 | 2,24 | 20 |
| 111C131 | VALVULA COMPACT ROSCA H-M 3/4" FPM | 0,13963 | 0,00892 | 2,98 | 20 |
| 111C132 | VALVULA COMPACT ROSCA H-M 1" FPM | 0,201 | 0,01553 | 3,309 | 15 |
| 111C133 | VALVULA COMPACT ROSCA H-M 1 1/4" FPM | 0,31882 | 0,02244 | 5,27 | 15 |
| 111C134 | VALVULA COMPACT ROSCA H-M 1 1/2" FPM | 0,473 | 0,02244 | 5,218 | 10 |
| 111C135 | VALVULA COMPACT ROSCA H-M 2" FPM | 0,741 | 0,02243 | 5,125 | 5 |





ITEM 721 | Salida R/H macho FPM

| CÓDIGO | r | DN | PESO (g) | A | B | C | D | F | PN | TIPO ROSCA |
|--------|--------|----|----------|-----|-----|----|----|-----|------|------------|
| 11C130 | 1/2" | 15 | 106 | 96 | 48 | 14 | 17 | 80 | PN10 | BSP |
| 11C131 | 3/4" | 20 | 137 | 106 | 53 | 17 | 22 | 80 | PN10 | BSP |
| 11C132 | 1" | 25 | 201 | 122 | 60 | 19 | 25 | 101 | PN10 | BSP |
| 11C133 | 1 1/4" | 32 | 323 | 146 | 74 | 25 | 27 | 130 | PN10 | BSP |
| 11C134 | 1 1/2" | 40 | 450 | 174 | 87 | 33 | 36 | 130 | PN10 | BSP |
| 11C135 | 2" | 50 | 741 | 202 | 104 | 39 | 39 | 150 | PN10 | BSP |



Documentación de Producto



Certificados de Producto

Certificados de Empresa

