



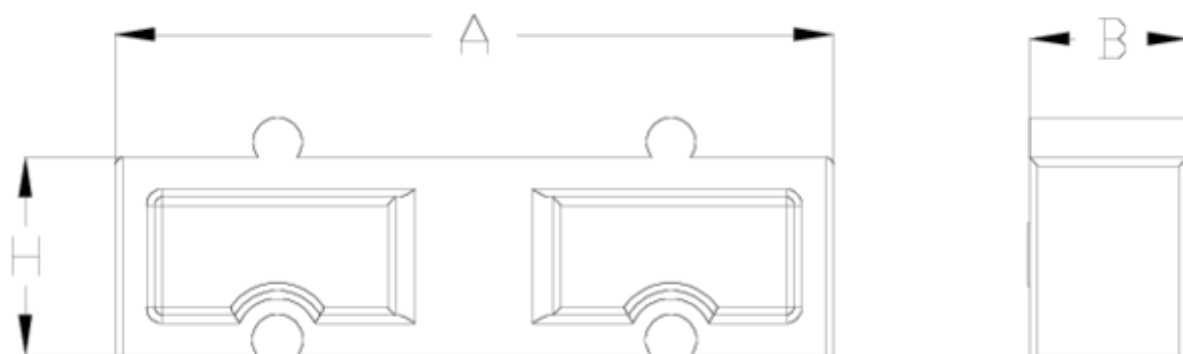
## Colliers de fixation / Colle et décapant PVC-U

# Support éleveur

## ITEM 884

| RÉFÉRENCE | DESCRIPTION                  | Poids net | Volume (m <sup>3</sup> ) | Poids brut | Unités par lot |
|-----------|------------------------------|-----------|--------------------------|------------|----------------|
| 1091462   | SOPORTE ELEVADOR 20-25       | 0.008599  | 0.004725                 | 0.985      | 100            |
| 1091463   | SOPORTE ELEVADOR 32-40       | 0.013199  | 0.004725                 | 1.445      | 100            |
| 1091464   | SOPORTE ELEVADOR 50-63       | 0.021698  | 0.00472                  | 1.21       | 50             |
| 1091465   | SOPORTE ELEVADOR 75-90       | 0.036497  | 0.00472                  | 1.22       | 30             |
| 1091466   | SOPORTE ELEVADOR 110-125     | 0.05899   | 0.00472                  | 0.715      | 10             |
| 1091467   | SOPORTE ELEVADOR 140-160     | 0.07843   | 0.00891                  | 1.28       | 10             |
| 1091468   | SOPORTE ELEVADOR 200-225-250 | 0.12185   | 0.00891                  | 1.465      | 8              |
| 1091470   | SOPORTE ELEVADOR 315         | 0.3       | 0.01553                  | 1.56       | 4              |





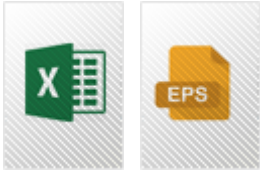
## ITEM 884 | Support elevateur

| Código | d           | Peso (g) | A   | B  | H  |
|--------|-------------|----------|-----|----|----|
| 91462  | 20-25       | 8        | 40  | 12 | 20 |
| 91463  | 32-40       | 12       | 53  | 14 | 20 |
| 91464  | 50-63       | 15       | 75  | 16 | 20 |
| 91465  | 75-90       | 25       | 105 | 20 | 20 |
| 91466  | 110-125     | 42       | 150 | 24 | 20 |
| 91467  | 140-160     | 75       | 210 | 28 | 20 |
| 91468  | 200-225-250 | 135      | 275 | 31 | 20 |





## Documentation Produit



## Certifications de produits

## Certificats d'entreprise

