



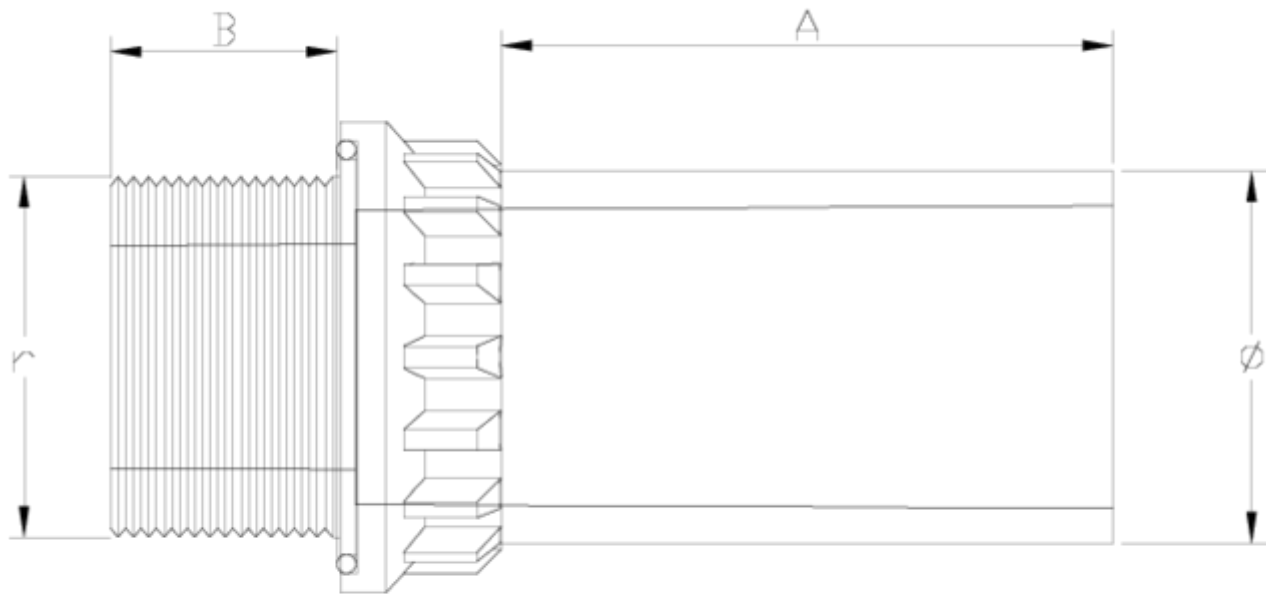
Raccords filetés PP

SORTIE PE

ITEM 698

| RÉFÉRENCE | DESCRIPTION | Poids net | Volume (m ³) | Poids brut | Unités par lot |
|-----------|--------------------------------|-----------|--------------------------|------------|----------------|
| 111C800 | TRANSITION F.MALE-PE 20-1/2" | 0,018087 | 0,00891 | 0,73 | 30 |
| 111C801 | TRANSITION F.MALE-PE 25-3/4" | 0,026472 | 0,015532 | 0,8492 | 25 |
| 111C802 | TRANSITION F.MALE-PE 32-1" | 0,044832 | 0,00891 | 1,525 | 25 |
| 111C803 | TRANSITION F.MALE-PE 40-1 1/4" | 0,05638 | 0,00892 | 1,475 | 20 |
| 111C804 | TRANSITION F.MALE-PE 50-1 1/2" | 0,11484 | 0,01553 | 2,03 | 15 |
| 111C805 | TRANSITION F.MALE-PE 63-2" | 0,22776 | 0,01553 | 2,545 | 10 |





ITEM 698 | SORTIE PE

| CÓDIGO | f -r | DN | PESO (g) | A | B | PN | TIPO ROSCA |
|--------|-----------|----|----------|----|----|------|------------|
| 11D800 | 20-1/2" | 15 | 18 | 65 | 14 | PN16 | BSP |
| 11D801 | 25-3/4" | 20 | 20 | 65 | 17 | PN16 | BSP |
| 11D802 | 32-1" | 25 | 25 | 70 | 19 | PN16 | BSP |
| 11D803 | 40-1 1/4" | 32 | 42 | 70 | 21 | PN16 | BSP |
| 11D804 | 50-1 1/2" | 40 | 60 | 79 | 22 | PN16 | BSP |
| 11D805 | 63-2" | 50 | 93 | 89 | 25 | PN16 | BSP |





Documentation Produit



Certifications de produits



Certificats d'entreprise



Pol. Ind. Plá Vallonga,
c/ Agua, 28
03006 ALICANTE (España)



+34 965 11 42 82



+34 965 11 48 62



tecnicocomercial@hidroten.es



Service d'Attention
Technique Commerciale
+34 966 105 888



www.hidroten.es